



PROWLER

PRODUCT CATALOG



ATTACHMENTS



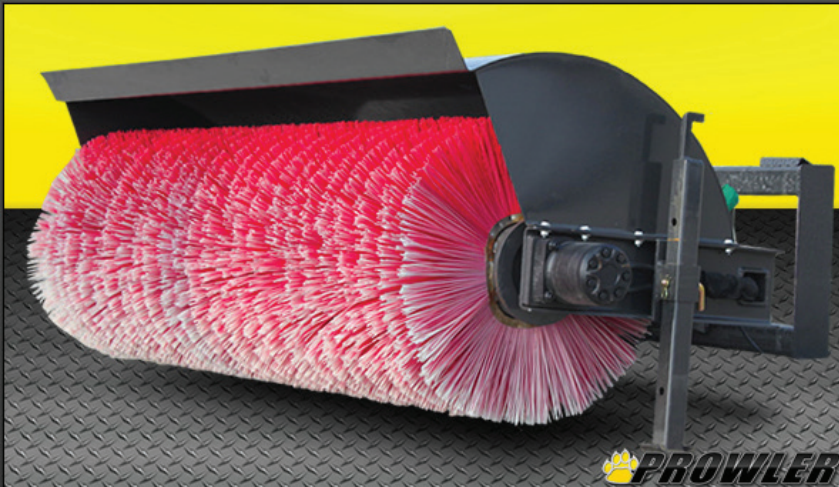
RUBBER TRACKS



OVER TIRE TRACKS

PROWLERTRACKS.COM

POWER ANGLE BROOM



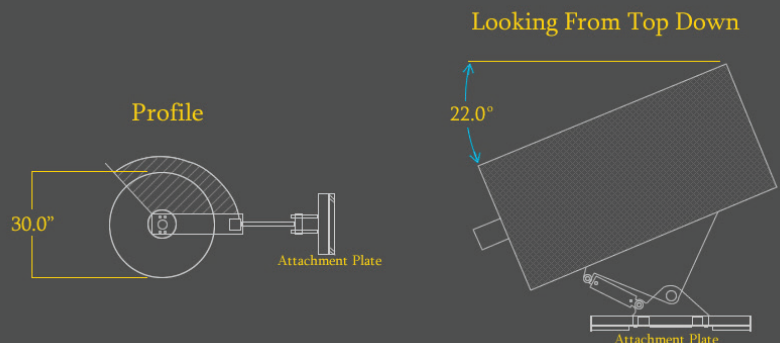
Broom Specifications Available in 72" and 84"

- Weight: 72" - 890lbs; 84" - 924lbs
- Max Angle: 22°
- Width At Max Angle: 66"
- Brush Diameter: 30"
- Motor: Reversible Parker
- Standard Brush: Poly

The Prowler Power Angle Broom is available in 72 or 84 inch widths and is the ideal way to sweep away dirt, rocks, light snow, or other debris. The Broom Attachment is powered by a reversible Parker Motor and features an 8 inch Core and Poly/ Wafer. Comes with Standard Poly Brushes. Steel Wafers and Poly/Wafer combo brushes are also available.



Made in the USA!



PROWLERTRACKS.COM

HEAVY DUTY AUGER DRIVE



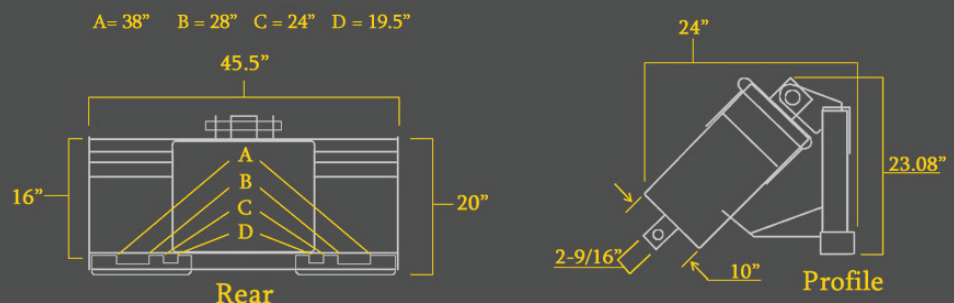
Auger Drive Specifications

- Weight: 304 lbs.
- Continuous PSI: 3000 psi
- Max Peak PSI: 4000 psi
- Output Shaft Size: 2 - 9/16"
- Max RPM: 81 rpm

Compatible with the following bits
6", 9", 12", 15", 18", 20", 24", 30" and 36"

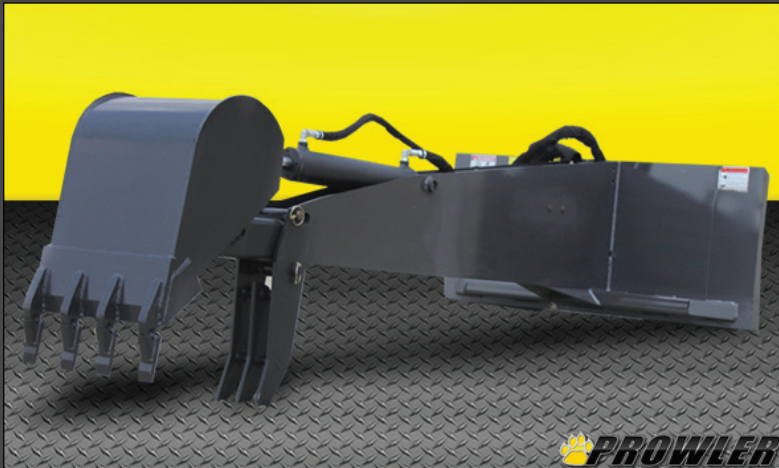
Pressure (psi)	Theoretical Torque (Lbs./ft)
2,000	2,206
2,500	2,531
3,000	3,039

Our heavy duty Skid Steer Auger has a max peak pressure of 4000 psi and continuous max pressure of 3000 psi. The auger consists of a motor and gear box to prevent chains from breaking or coming loose. 100% made in the USA including the drive motor and gearbox, which most manufacturers source from China. The auger drive is complete with mounting plate, hoses and new style flat face leak-proof couplings, no need to pay extra for anything else. Our output shaft is a 2 9/16" drive, powerful enough for the toughest jobs. They are available in both round and hex.



PROWLERTRACKS.COM

BACKHOE-STIFF ARM



Stiff Arm Specifications

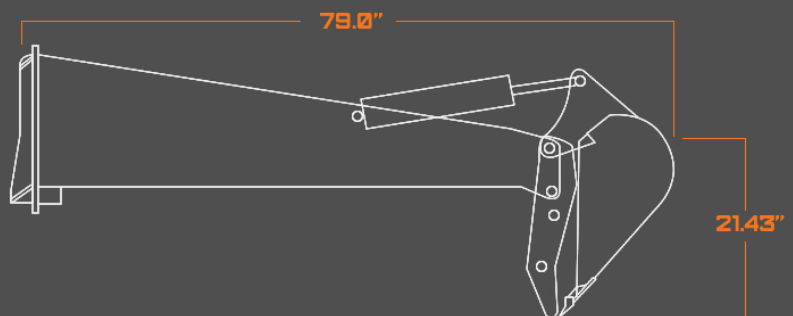
- Backhoe Weight: 500 lbs.
- Bucket Weight: 125 lbs.
- Bucket Size: 16"
- Max Dig Depth: 7'
- Attachment Plate: Universal

Buckets are available in
8", 12", 16", 20" and 24"

This NEW Backhoe Skid Steer Loader Attachment comes completely assembled ready to go. Equipped with 16 inch bucket and thumb, you will be able to easily mount your universal quick attach to the heavy duty frame and begin digging.

All of our optional buckets come equipped with replaceable ground engaging teeth. Comes with a universal skid steer style attachment plate, hydraulic hoses, and flat faced couplers are included. All pins and bushings are greaseable.

Made in the USA!!!



PROWLERTRACKS.COM

BRUSH CUTTER (LOW/MID FLOW)



Low/Mid Flow Specifications

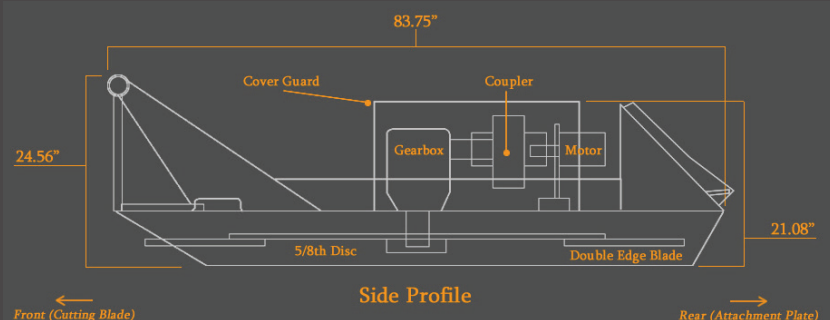
Available in 60" and 72"

- Weight range: 1,450lbs - 1,650lbs.
- Total Width: 82"
- Cutting Width: 60"-72"
- Flow: Low Flow | 14-30 gpm
- Blades: 3 Bi-Directional
- Motor: Parker Motor
- Gearbox Horsepower: 75 hp

Our extreme duty Brush Cutter comes in a 72" mowing deck. The low/mid flow of 14-22 gpm is required on the low flow. There are 3 bi-directional blades, a 75HP Gear Box and a Parker motor on both of the brush cutters.

The Prowler Bushwacker open front multi-blade mower is the ultimate rotary style brush cutter available on the market today. Easily replaceable blades. The perfect attachment for tough clearing and mowing applications.

Made in the USA!!!



PROWLERTRACKS.COM

BRUSH CUTTER (HIGH FLOW)



High Flow Specifications

Available in 60" and 72"

- Weight: 1625lbs - 2000 lbs.
- Blade Count: 3 Bi-Directional
- Blade Type: 5/8" AR400
- Flow Requirement: 30-50 GPM
- Cut: 72"
- Motor: 100 HP Planetary Drive
- Attachment Plate: Universal

Our Super Duty Brush Cutter is an ideal attachment for tough clearing applications. The cutter comes in a 60" or 72" cutting width. It is equipped with 3 bi-directional blades, powered by a high torque motor and features a 100-hp Omni gear box. A flow of 30-50 gpm is required.

- 1/4" deck with sides reinforced with 3/8" AR400
- 6" cutting capacity
- 100 HP Planetary Drive with 6 bolt flange blade carrier
- 3 bidirectional blades made with 5/8" AR400

• Gear motor with 3800 PSI external relief valve

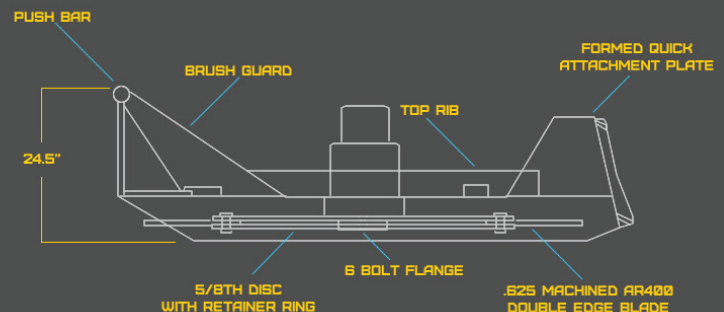
• Requires a case drain.

Comes with 1 year warranty. Does not cover the blades or hoses.

Made in the USA!!!



HIGH FLOW BRUSH CUTTER



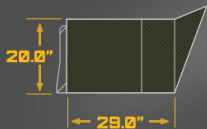
PROWLERTRACKS.COM

CONCRETE BUCKET



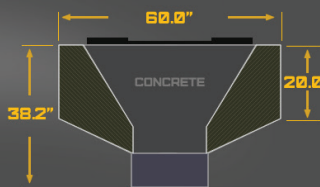
Our Heavy Duty bucket is designed for carrying 1/2 Yard of cement or concrete using your skid steer. It allows you to easily transport concrete to areas inaccessible to trucks or other machines quickly without any waste. Our concrete buckets are designed to carry either 1/2 or 3/4 yard. This Concrete Bucket is 100% American Made!

SIDE VIEW

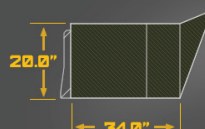


1/2 YARD
CONCRETE/CEMENT BUCKET

TOP VIEW

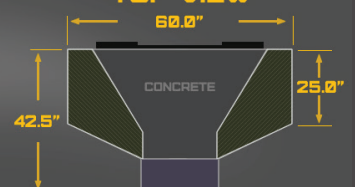


SIDE VIEW



3/4 YARD
CONCRETE/CEMENT BUCKET

TOP VIEW



- Weight: 393 lbs.
- Width: 60.0"
- Height: 20.0"
- Length: 38.2"
- Attachment Plate: Universal

- Weight: 420 lbs.
- Width: 60.0"
- Height: 20.0"
- Length: 34.0"
- Attachment Plate: Universal

PROWLERTRACKS.COM

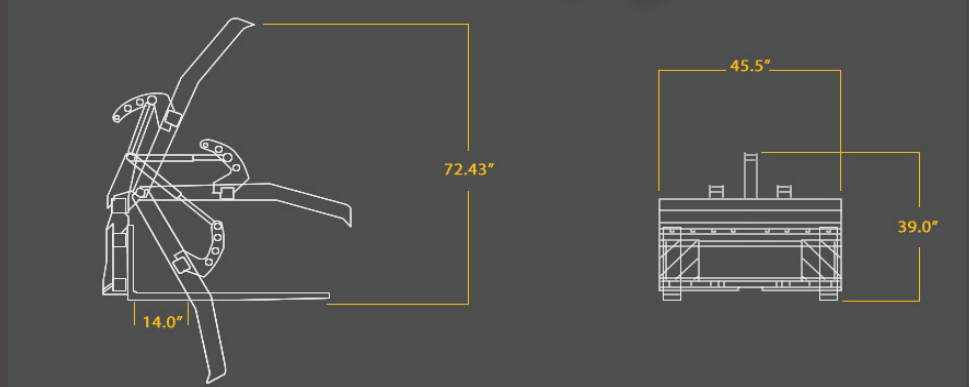
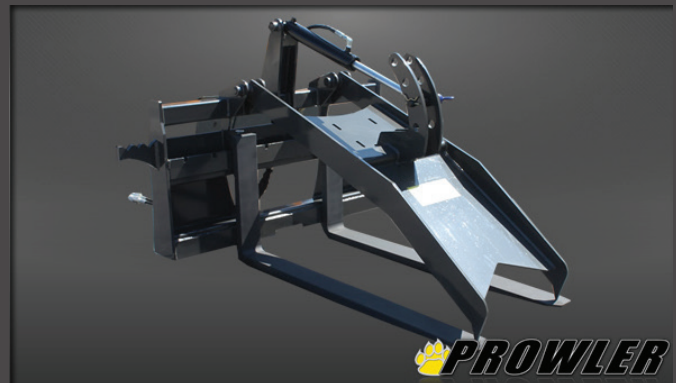
EXTREME PALLET FORK GRAPPLE



Grapple Forks Specifications

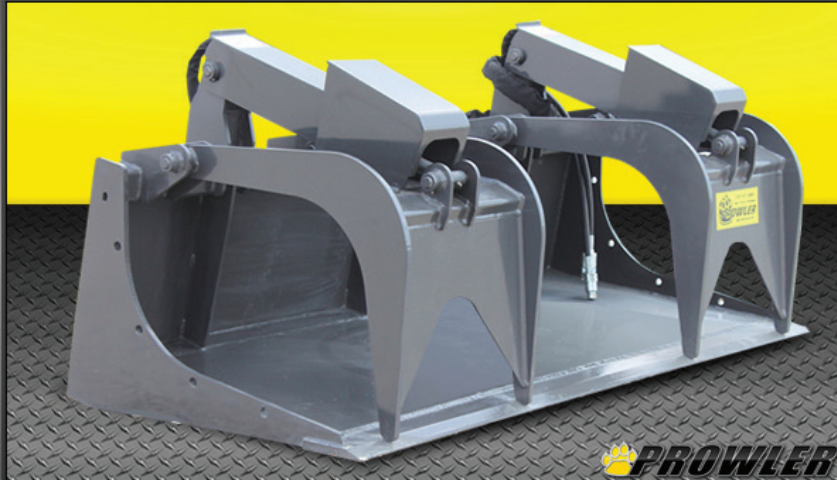
- Weight: 525 lbs.
- Fork Length: 48"
- Max Opening: 72.43"
- Width: 45.5"
- Cylinder Count: 1
- Attachment Plate: Universal

Prowler's Extreme Duty Pallet Fork Grapple is ideal for farm, ranch, forestry, industrial and landscaping operations. The grapple thumb is adjustable for small or large loads and the 2X12 hydraulic cylinder provides plenty of clamping force. The Fork Tines are American made and heat treated from tip to heel for maximum durability. Rated to carry 4000 lbs.



PROWLERTRACKS.COM

HEAVY DUTY DEMO GRAPPLE BUCKET



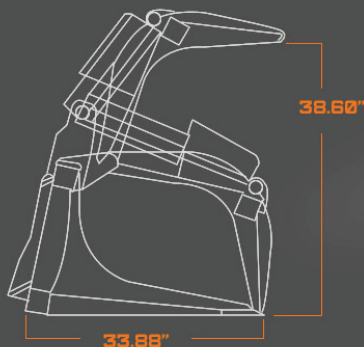
Demo Grapple Specifications

Available in 66", 72" and 78"

- Weight: 750lbs-925lbs
- Width: 72"
- Max Opening: 38.60"
- Depth: 33.88"
- Cylinders: 2" Bore, 10" Stroke
- Attachment Plate: Universal

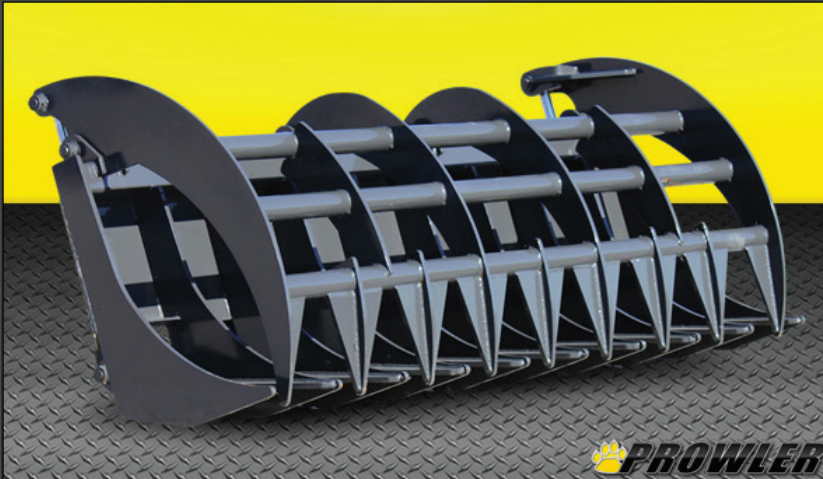
Also available with teeth

The Heavy Duty Grapple Buckets are very versatile skid steer attachments, and a great choice for anyone who owns a skid steer machine. They are available in a wide range of sizes. These units can easily pick up logs, rocks, left over building supplies and other type of debris. All of our grapple buckets have 2" bore by 10" stroke cylinders, with all hydraulic lines routed inside the tubing to prevent tears. They are also built with top quality steel, oversized points and bushings with grease fittings at every pivot point. Every unit is designed to exceed the lifting capacity of the skid steer machine it is attached to. Made in the USA!



PROWLERTRACKS.COM

EXTREME GRAPPLE RAKE



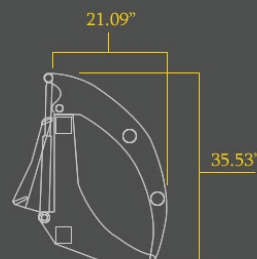
Grapple Rake Specifications Available in 63", 72", 81", 84 and 96"

- *Weight range: 820lbs - 1,150lbs.
- Width: 72"
- Bore: 2"
- PSI Rating: 4,000 psi
- Hydraulic Cylinders: 2

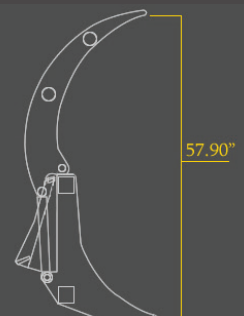
Our Superduty Grapple Rake design is ideal for raking up debris, while allowing dirt to fall through. The grapples can then be used to load the debris into a dump truck or to roll debris into tight piles if you are planning to burn. The Superduty grapple is available with standard single grapple or optional two independent grapples. We use twin 2" bore by 10" stroke cylinders, rated at 4000 psi to handle the toughest jobs.

The Superduty Grapple Rakes are built with 1/2" top quality steel.

Made in the USA!



Closed



Opened

PROWLERTRACKS.COM

SINGLE HIGH BACK HAY SPEAR

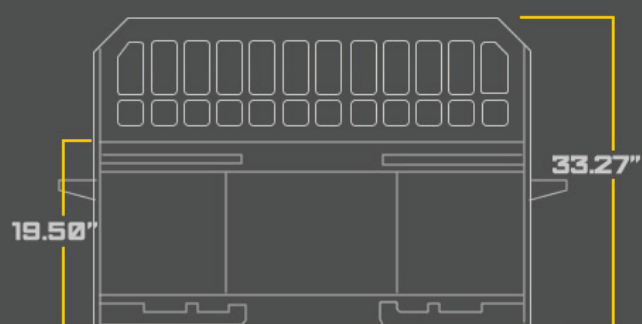
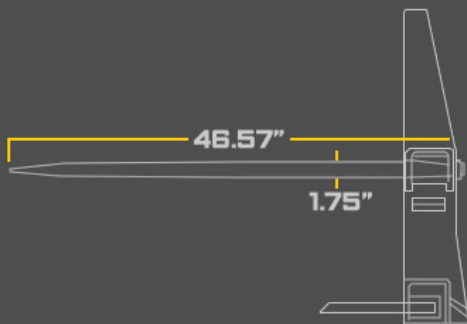


Spear Specifications

- Weight: 250 lbs.
- Load Capacity: 2,600 lbs.
- Height: 33.27"
- Overall Length: 46.57"
- Spear Thickness: 1.75"
- Attachment Plate: Universal

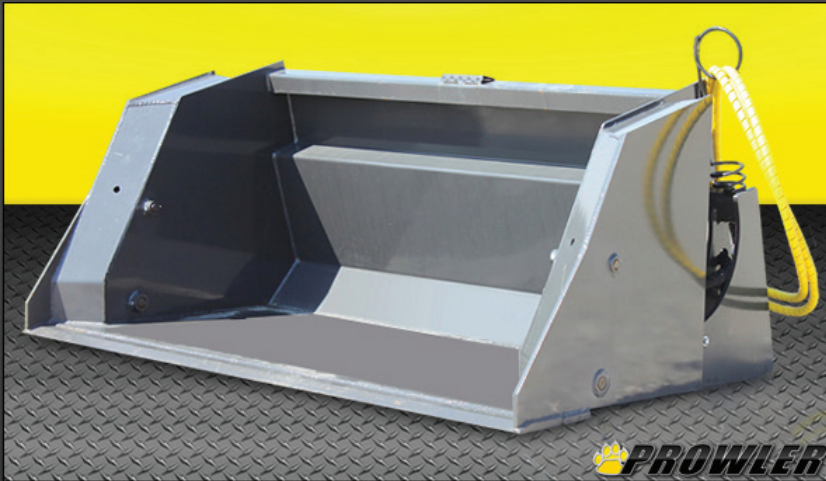
Prowlers Super duty High Back Hay Spear is designed to increase your leverage and safety when rolling the bail back towards the cab. Hay Spears easily move bales of hay with a quick hook up on your skid steer or tractor. Euro Style and John Deere mounts are available. Our Hay Spear has an amazing load capacity of 2,600 LBS.

100% American Made!!!



PROWLERTRACKS.COM

HIGH DUMP BUCKET

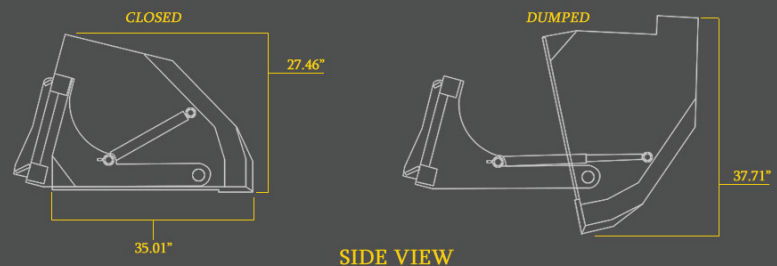


High Dump Specifications Available in 72", 84" and 96"

- Weight range: 950lbs - 1100lbs
- Width: 72"
- Extended Reach: 3'
- Covered Hydro Cylinders: Yes
- Attachment Plate: Universal

Our heavy duty High Dump Bucket is an essential tool in the poultry business. With 3 extra feet of dumping height, you can easily load dump trucks to capacity. The Prowler high dump bucket has extra tall sides to make your clean up job get done faster. The cylinders are protected on the sides, so you don't lose material space inside the bucket and making clean out much easier. These are all forged, assembled and powder coated in the USA!

*NOTE: 72" bucket displayed in photo's. Actual size may vary. Please be sure to read the bucket specifications above.



PROWLERTRACKS.COM

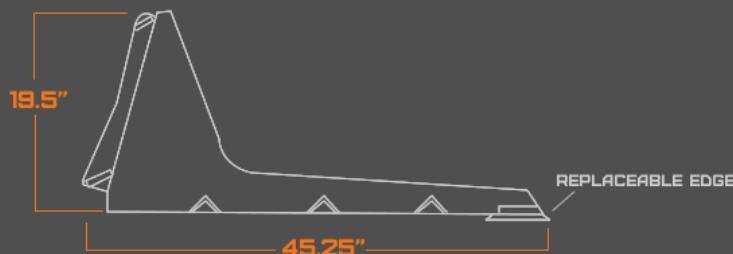
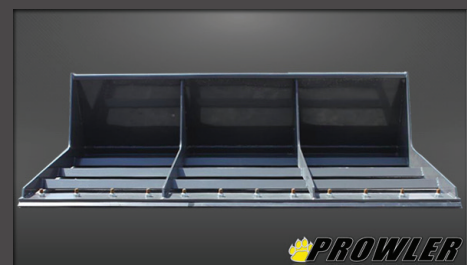
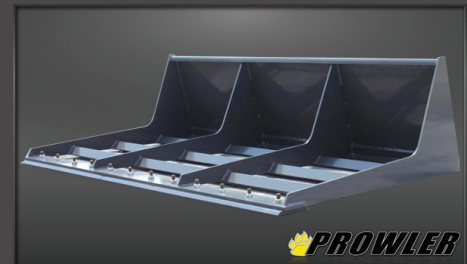
LAND LEVELER



Leveler Specifications

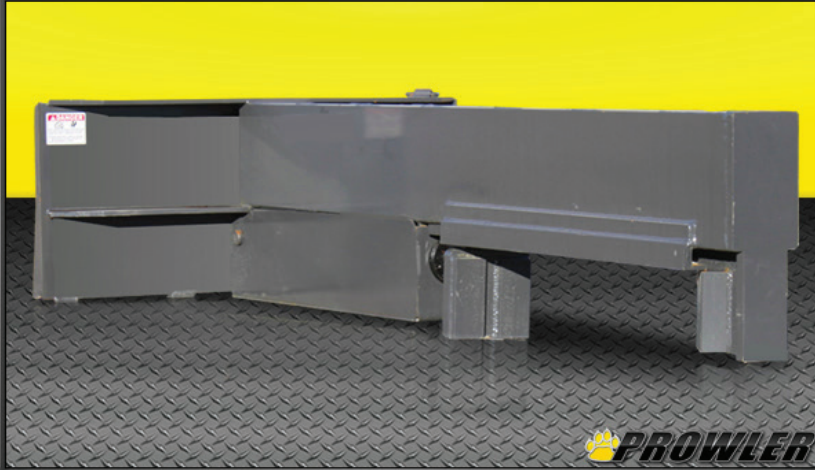
- Weight: 419 lbs.
- Width: 72"
- Length: 45.25"
- Height: 19.5"
- Attachment: Universal

Our land leveler is used to cultivate, grade, cut, and mainly level land. This attachment is not designed to transfer large amounts of dirt. The land leveler is specifically used for leveling jobs such as dirt roads and gravel driveways. Available Sizes: 72"
Made in the USA!



PROWLERTRACKS.COM

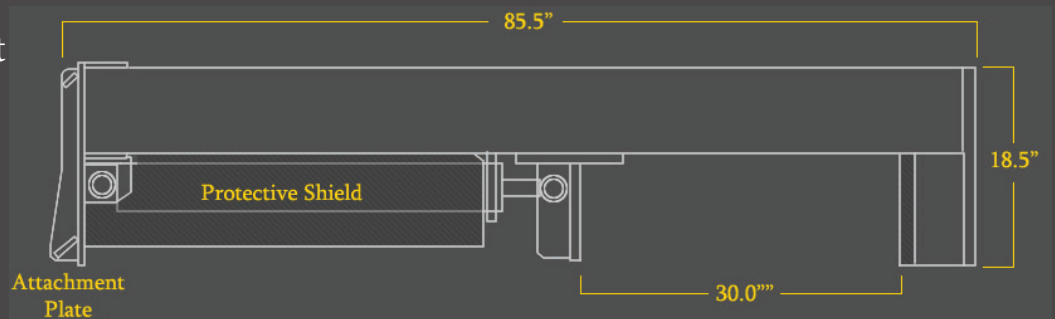
INVERTED LOG SPLITTER



Log Splitter Specifications

- Weight: 796 lbs.
- Total Length: 85.5"
- Height: 18.5"
- Max. Log length: 30"
- Attachment Plate: Universal

The Prowler Inverted Log Splitter utilizes a 1" thick AR400 cutting blade and 20 tons of force to make quick work of firewood processing. Allows the user to split logs up to 30 inches in length without leaving the seat of the skid steer loader. The 5 inch heavy duty hydraulic cylinder is fully enclosed and protected. The unit is made in the USA with a powder coated finish. It comes complete with covered hoses and flat face couplers, ready to hook up and use the day you receive it.



PROWLERTRACKS.COM

LONG BOTTOM BUCKET



Long Bottom Specifications

Available in 66", 72", 78" and 84"

Weight: Range from 415lbs-535lbs

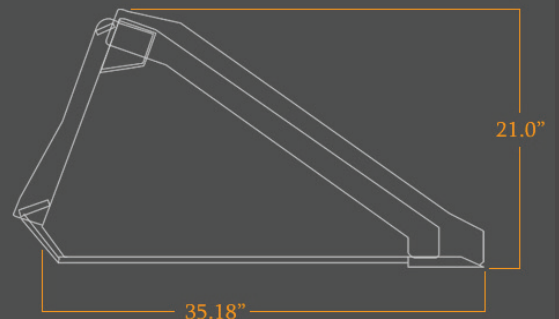
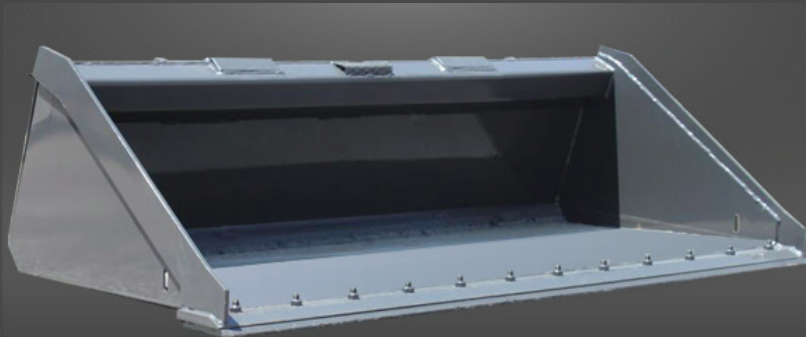
Height: 21"

Length: 35.18"

Width: 72"

Available with teeth and Bolt on Cutting Edge

Prowler's Long Bottom Skid Steer Loader Bucket is designed to give the operator greater cutting edge visibility, as well as provide greater load capacity than a standard low profile bucket. It is an ideal solution for upgrading or replacing your original bucket. This bucket is 100% made in the USA and is available with optional welded on teeth, bolt on cutting edge or tooth bar.



PROWLERTRACKS.COM

HEAVY DUTY PALLET FORKS



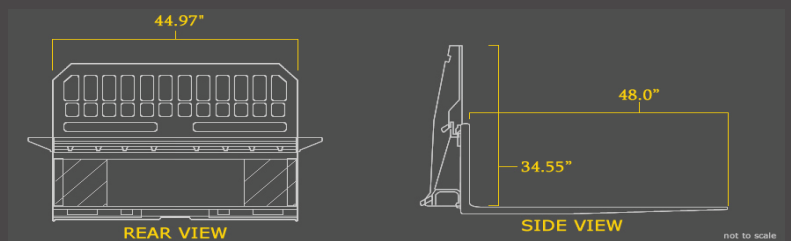
Pallet Fork Specifications

Available in 48", 60" and 72"

- Weight: 450 lbs.
- Frame Width: 44.97"
- Frame Height: 34.55"
- Fork Length: 48"
- Fork Width: 4"
- Lift Capacity: 4,000 lbs.
- Fork Thickness: 1-1/2"

Prowler's 48 inch Heavy Duty Pallet Forks rated to carry 4,000 pounds with steps on each side for easy access into the operators seat and a heavy back frame that is easy to see through. These are manufactured, forged, assembled and powder coated in the USA!

Our Pallet Forks are nice OEM quality units. The fully adjustable forks are easy to use. Anyone with a skid steer should have a nice reliable set of pallet forks on hand for quickly moving pallets, lumber, bags of soil or about anything else you can think of.



These are compatible with many skid steers and track loaders such as ASV, Bobcat, CAT, Case, Gehl, John Deere, Mustang, New Holland, Takeuchi, Thomas and many others.

PROWLERTRACKS.COM

MANURE FORKS



Manure Forks Specifications Available in 60", 66" and 72"

Weight: 332lbs-369lbs.

Width: 60"

Recommended HP: 55 and Under

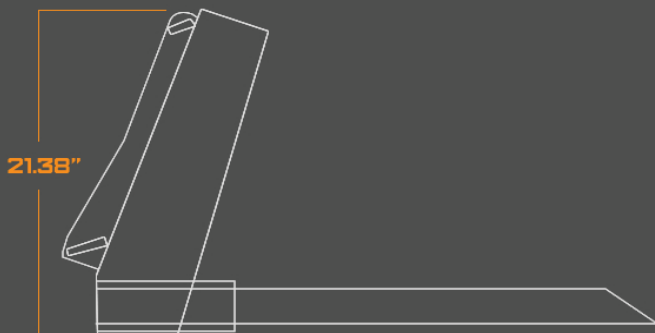
Height: 21.38"

Tines: 1.5" Cold Rolled Steel

Attachment Plate: Universal

The Prowler Manure Forks are useful for moving manure and other general materials without disturbing the soil around or beneath it. The tines slide in through the front and are pinned from the rear for easy access.

The tines are made of 1.5" Cold Rolled Steel and is recommended to be used on loaders at, or under 55 horsepower.



PROWLERTRACKS.COM

EXTREME SKID STEER RIPPER

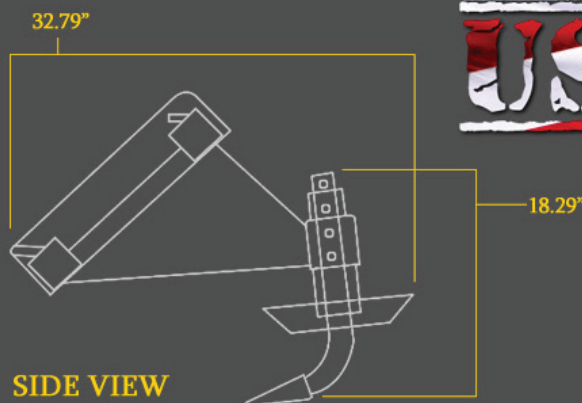


Ripper Specifications

Available in 60", 72" and 84"

- Weight: 500lbs-600lbs
- Overall Width: 69"
- Slot Count: 8
- Shank Count: 4
- Rip Width: 60"
- Adjustable Shank Height: Yes
- Attachment Plate: Universal

Prowler's Heavy Duty Skid Steer Ripper Attachment is excellent for ground preparation. The scarifier shanks have replaceable teeth and are adjustable for ground penetration depth. Works great for breaking up the ground on job sites, loosening rocks and debris from the soil, preparing for planting, etc. These are nice OEM quality units featuring universal quick attach and powder coated finish. Available in 60", 72", and 84" ripping widths. Made in the USA!



PROWLERTRACKS.COM

ROCK BUCKET



Rock Bucket Specifications

Available in 72" and 81"

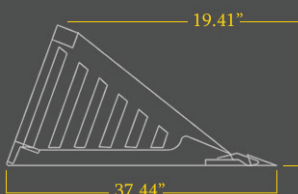
- Weight range: 435lbs-495lbs.
- Height: 19.41"
- Length: 37.44"
- Width: 72"

Available with teeth

The Prowler Heavy Duty Rock Bucket is built from High Quality Steel and designed for sifting and separating rocks and boulders. Great for cleaning up farm fields and ranch pastures. Also perfect for cleaning up around the house or construction site. 100% made in the USA. Available with smooth cutting edge or weld on replaceable teeth.



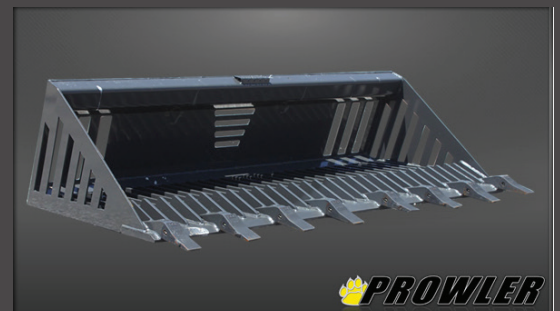
PROFILE VIEW



FRONT VIEW

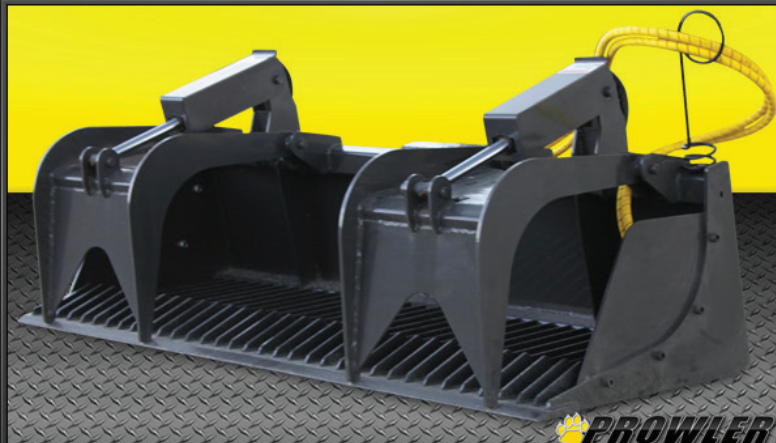


72" Bucket Shown



PROWLERTRACKS.COM

HEAVY DUTY ROCK GRAPPLE BUCKET



Rock Grapple Specifications

Available in 63", 72" and 81"

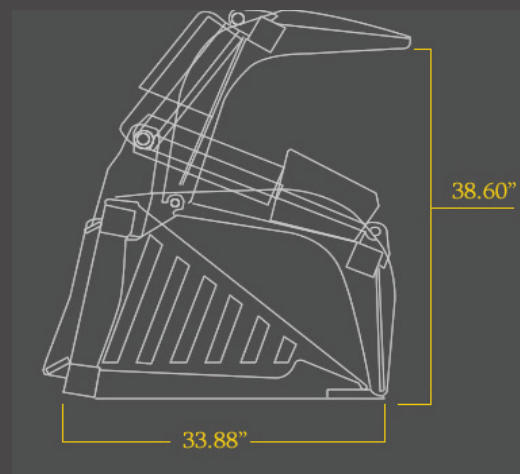
- Weight: 750lbs-800lbs
- Max Opening Height: 38.60"
- Depth: 33.88"
- Width: 72"
- Stroke: 10"
- Cylinder Count: Twin 2" Bore
- PSI Rating: 3,000 psi

Available with teeth

Our 72" Hydraulic Heavy Duty Rock Bucket is built out of high quality steel components durable enough for sifting out large rocks. It works excellent in pastures, lawns or on construction sites. It will catch any rock or piece of debris that is larger than 2-3/8".

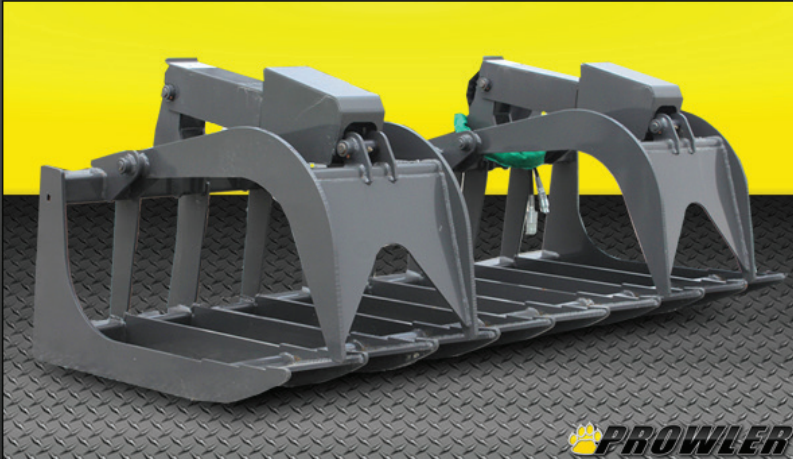
This hydraulic rock bucket uses twin 2" bore by 10" stroke cylinders rated at 3,000 psi.

This attachment is 100% made in the USA.



PROWLERTRACKS.COM

HEAVY DUTY ROOT GRAPPLE



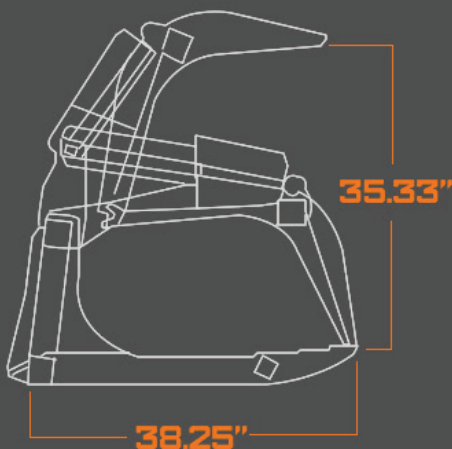
Root Grapple Specifications

*Available in:

63", 66", 72", 78", 81" and 84"

- Weight range: 700lbs-825lbs
- Max Opening: 35.33"
- Depth: 38.25"
- Cylinders: 2 with 10" Stroke
- Attachment Plate: Universal

The Heavy Duty Root Grapple is not only a necessity in the tree industry but also for contractors clearing a lot for home site building. It is also essential for storm damage clean up. One feature that separates our Heavy Duty Root Grapple from competitors, is that we offer optional bolt on cylinder rod covers to protect the hydraulic cylinder shaft. Most root grapples only have the actual cylinder enclosed and not the shaft. We have the option to protect both. Anyone that has had debris fall on the cylinder shaft knows what damage is caused. The Heavy Duty Root Grapple is ideal for moving logs, brush, rocks or just about any type of debris. Each of our hydraulic cylinders have a 2 inch bore with a 10 inch stroke and operate independently to adjust for uneven loads. All of our root grapples are built with 1/2 inch top quality steel with greasable pins and bushings at all hinge points. Every unit exceeds the lifting capacity of the skid steer machine it is used on.



PROWLERTRACKS.COM

EXTREME ROOT GRAPPLE

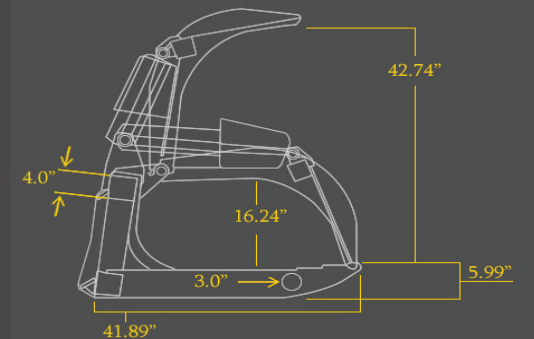


Extreme RootGrapple Specifications

Available in 63", 66", 72", 78", 81" and 84"

- Weight range: 918 lbs. - 1050 lbs
- Size: 72"
- Cylinders: 2
- Opening Height: 42.74"
- Length: 41.89"
- Attachment Plate: Universal

The Prowler Super-duty Root Grapple is the one attachment you cannot do without. Indispensable for forestry work and storm cleanup, but also great on the jobsite, farm or ranch. Open bottom framing allows the grapple to handle large trees, stumps, building material, rocks and more, while the small debris falls to the ground. The open bottom allows maximum visibility even when the attachment is in the raised position. The root Grapple is the most versatile attachment you can own.



Some of the advantages to the Super Duty Series attachments:

- Enclosed hydraulic cylinder shaft design.
- Built from 1/2" thick steel plate on the top and bottom, with 4" square reinforcement tubing.
- Longer tines for bigger loads.
- Hydraulic lines routed inside the tubing to prevent tears.
- Tough Enough to handle larger higher horsepower Skid Steer and Track Loaders
- Hydraulic cylinders have a 2 inch bore and a 10 inch stroke.

Each of the hydraulic cylinders operate independently to adjust for uneven loads. All of our Super-Duty series root grapples are built with 1/2 inch high quality plate steel with greasable pins and bushings at all hinge points. Comes with covered hoses and fat face couplers.

This Root Grapple is 100% American Made!

PROWLERTRACKS.COM

EXTREME ROOT RAKE



Root Rake Specifications

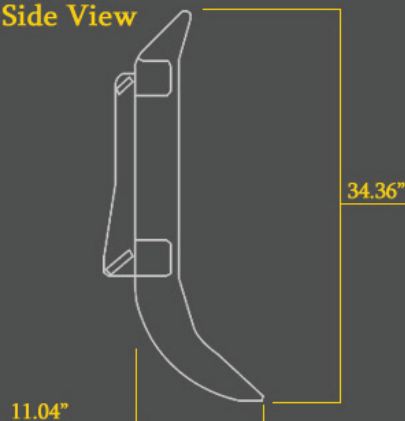
Available in:

66", 72", 84" and 96"

- Weight: 500lbs-650lbs
- Width: 72"
- Tine Spacing: 6"
- Tine Thickness: 9/16"
- Height: 34.36"
- Attachment Plate: Universal

Prowler's heavy duty 72" Root Rake is excellent for rolling debris into a tight pile for easy burning. You can easily remove large rocks, roots and other objects just below and on the surface. The tines are made from top quality 9/16" and spaced on 6" centers. Prowlers Root Rake comes in 66", 72", 84" and 96". These are nice OEM quality units. Complete with skid steer style universal quick attach and a Powder coated finish. Made in the USA!

Side View



PROWLERTRACKS.COM

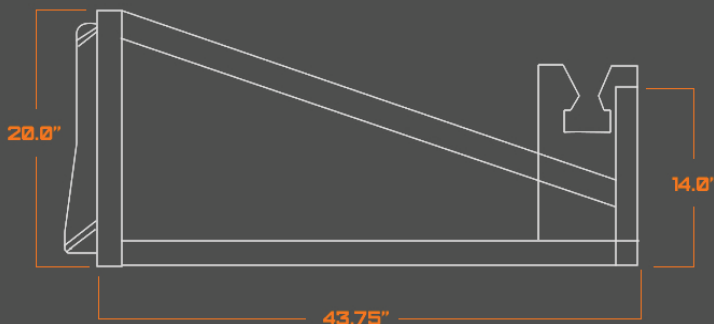
SOD ROLLER



Sod Roller Specifications:

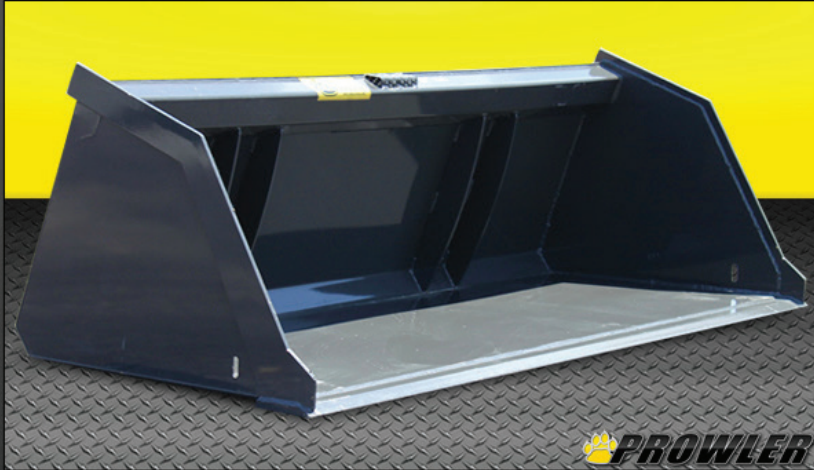
- Weight: 250 lbs.
- Sod Roll Max Width: 48"
- Sod Roll Max Diameter: 60"
- Frame Height: 20"
- Length: 43.75"
- Attachment Plate: Universal

This Sod Roller Skid Steer Attachment is used to help lay large rolls of sod. It is an essential tool for those doing lawn renovations and new home construction. Its simple design requires no hydraulics whatsoever. The strong tubular frame handles rolls of sod up to 48" wide and 60" in diameter.



PROWLERTRACKS.COM

SNOW AND LITTER BUCKET



Snow and Litter Bucket Specifications

Available in 60", 78", 84" and 96"

Weight range: 505lbs - 665lbs

Width: 78"

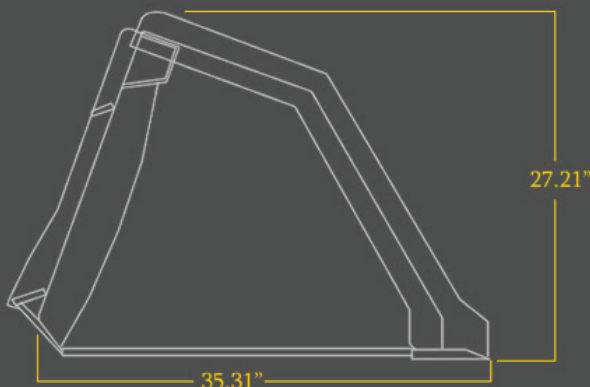
Height: 27.21"

Depth: 35.31"

Attachment Plate: Universal

Prowler's High capacity Snow and Litter Bucket is ideal for moving large volumes of light materials such as snow, mulch, manure, sawdust, building materials or other loose debris. These OEM quality buckets comes with a powder coated finish and are Made in the USA. This attachment will fit any skid steer with universal quick attach and is available with a bolt on cutting edge or tooth bar.

Profile View



PROWLERTRACKS.COM

EXTREME SNOW PLOW



Snow Plow Specifications
Available in 72", 84" and 96".

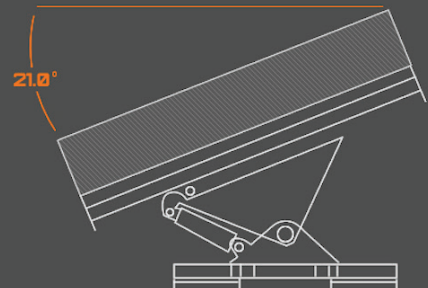
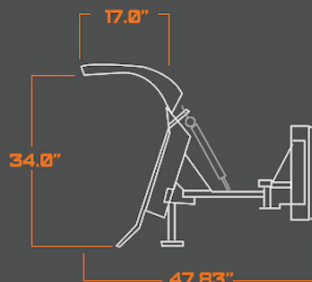
- Weight: 700lbs-945lbs
- 3" x 6" hydraulic cylinder
- ½" bolt on cutting edge
- Adjustable snow shoe

Prowler's X-treme Snow Plow allows you to efficiently clear driveways and parking lots. Easily angle the plow from within your cab, using the 3" x 6" hydraulic cylinder.

The top of the plow is rolled to keep the snow from coming back towards the cab. It's ½" bolt on cutting edge and adjustable snow shoes are standard. This attachment is available in 72", 84" and 96".

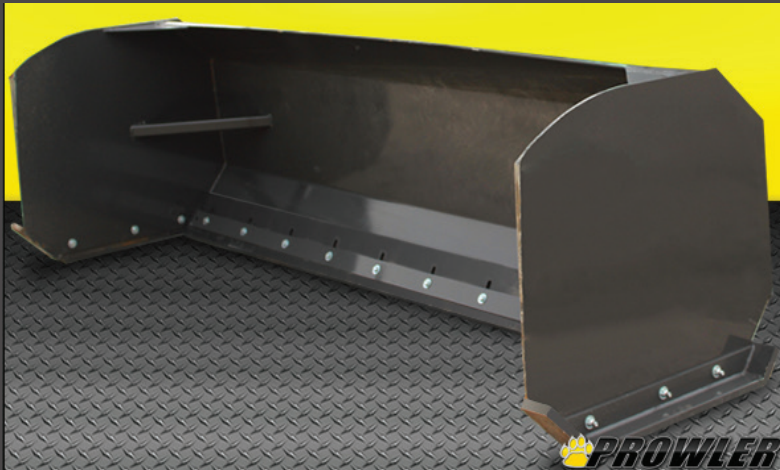


Made in the USA!



PROWLERTRACKS.COM

EXTREME DUTY SNOW PUSHER



Snow Pusher Specifications Available in 72", 84" and 96"

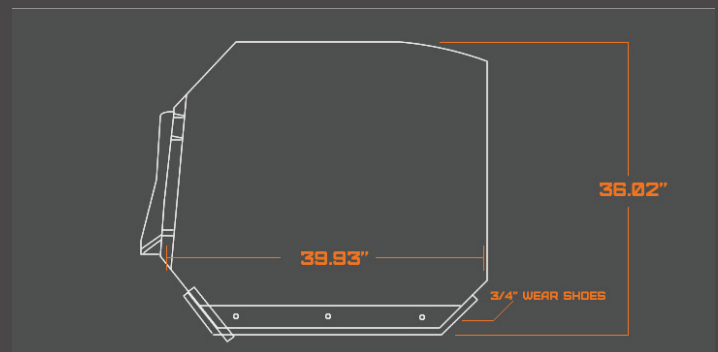
- Weight: 775lbs-896lbs
- Replaceable Rubber Edge: 1-1/2"x8"
- Side Thickness: 5/16"

Prowler's X-treme Snow Pusher allows you to clear a parking lot quicker than a snow plow.

The snow pusher edge is 1 ½" thick x 8" wide, adjustable, reversible and replaceable rubber so you won't tear up the pavement. The mold board is ¼" and the sides are 5/16" thick for extra support.

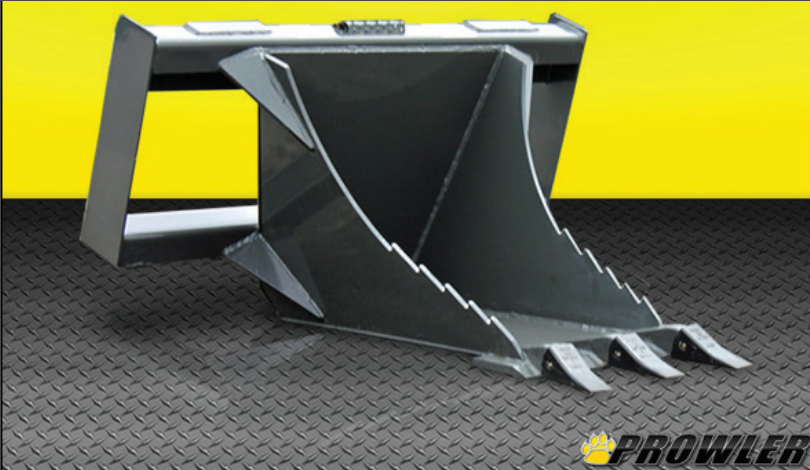
This attachment is available in 72", 84" and 96".

Our Snow Pushers are 100% American Made!!!



PROWLERTRACKS.COM

STUMP BUCKET

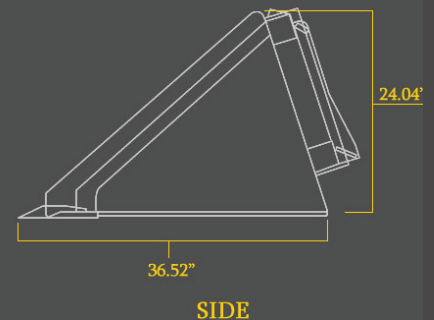
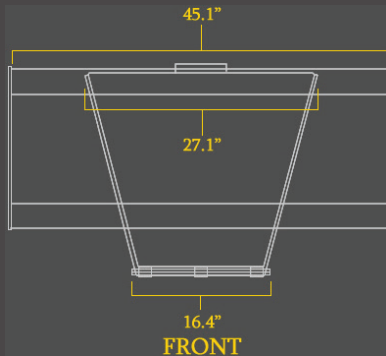


Stump Bucket Specifications:

- Weight: 282 lbs.
- Width: 45.1"
- Height: 24.04"
- Length: 36.52"
- Attachment Plate: Universal

Our heavy duty Stump Bucket is an excellent addition to your skid steer attachments. Easily dig around the stump, then pop it out. We have even had contractors dig house footings with the stump bucket. These stump buckets will enable you to be more versatile in your contracting needs.

This Stump Bucket is 100% American Made!



PROWLERTRACKS.COM

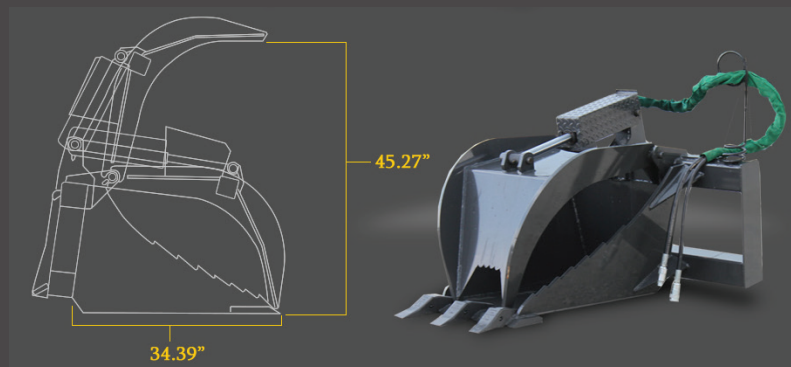
HEAVY DUTY STUMP BUCKET GRAPPLE



Stump Grapple Specifications

- Weight: 516 lbs.
- Cutting Edge: 1"
- Hydraulic Hose: 3/8"
- Opening: 45.27"
- Bucket Depth: 34.39"
- Replaceable Teeth: Yes

Our heavy duty Duty Stump Grapple is made from 1/2" top quality plate, 1" cutting edge, replaceable teeth and 3/8" hose. Think of the uses for this attachment. Not only are you able to dig out stumps, you are able to carry them away afterwards. No need to have another attachment for loading the stump into your dump truck, or moving the stump to a burn pile. Not only are you able to dig out stumps, you are able to carry them away afterwards. No need to have another attachment for loading the stump into your dump truck, or moving the stump to a burn pile. Some customers even use the bucket for digging shallow trenches/footer.



PROWLERTRACKS.COM

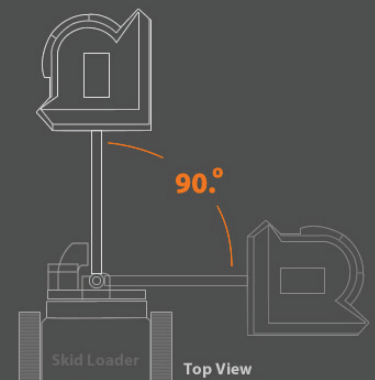
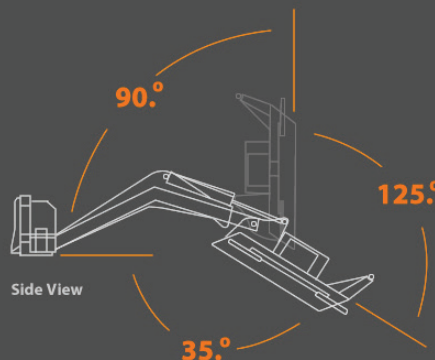
SWING BOOM CUTTER



Boom Cutter Specifications

- Weight: 1025 lbs.
- Blade Count: 3
- Blade Type: 5/8" AR400
- Reach: 96"
- Flow Requirement: 14-20 GPM
- Cut: 42"
- Motor: High Torque, 3000 psi relief value
- Attachment Plate: Universal
- Cylinders: 3" x 16"

This heavy duty Swing Boom Cutter is an excellent attachment to add to your collection. It is designed for cutting banks, fence lines, and right of ways. It also works great for clearing pond banks and cutting trails. This cutter has a significant reach advantage over our typical cutter. With a reach of 96" when extended horizontally and a vertical reach of sixteen feet, it makes clearing unwanted tree limbs less of a hassle. The cutter will also swing to the right and can be used as a side cutter. It is powered by a high torque motor with a 3000 PSI relief valve. A flow of 14-20 gpm is required. The one year warranty does not cover the replacement blades and hydraulic hoses. Made in the USA!!!



PROWLERTRACKS.COM

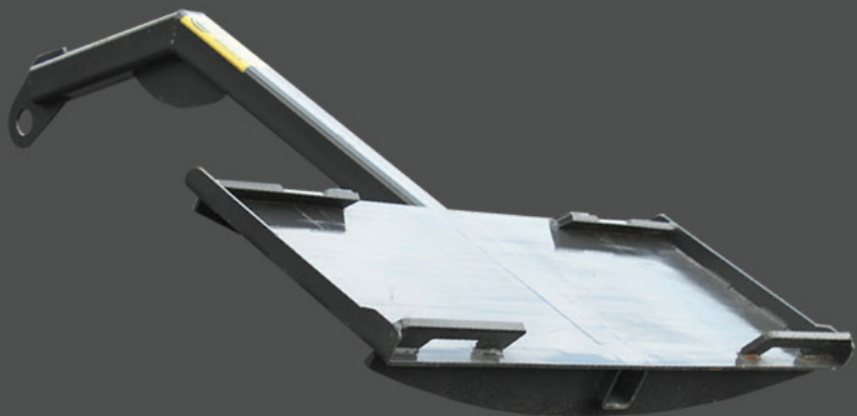
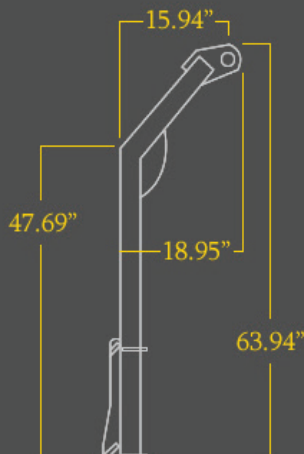
TREE BOOM



Tree Boom Specifications

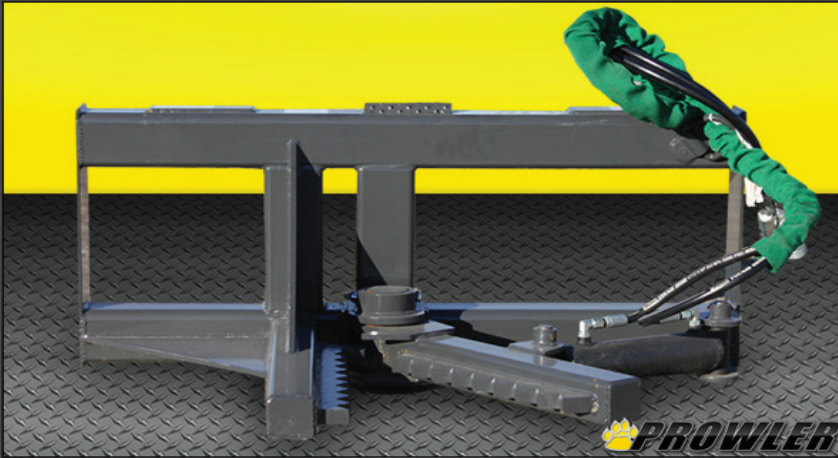
- Weight: 250 lbs.
- Overall Height: 63.94"
- Tubing Size: 3" x 3"
- Tubing Thickness: 1/4"
- Load Rating: 3,000 lbs.
- Attachment Plate: Universal

Our Super-Duty Tree Boom is an essential tool for anyone in the landscaping or nursery industry. This skid steer attachment easily picks up trees to be planted, transported or loaded. The boom is constructed from 3"x 3" tubing that is 1/4" thick. It is rated to carry 3,000 lbs. Made in the USA!!!



PROWLERTRACKS.COM

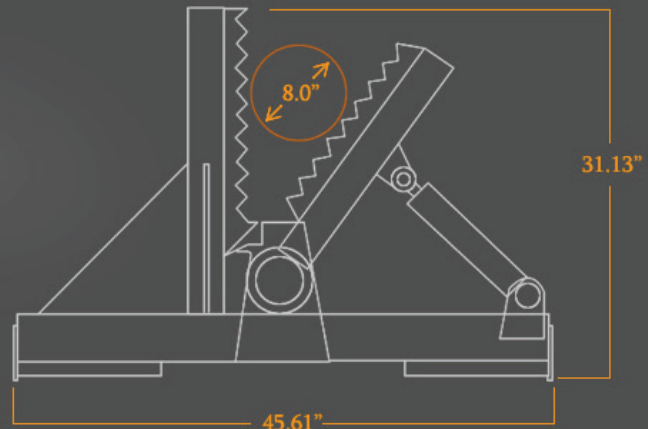
TREE PULLER



Tree puller Specifications

- Weight: 300 lbs.
- Frame Width: 45.61"
- Length: 31.13"
- Max. Opening: 8"
- Attachment Plate: Universal

The Prowler Heavy Duty Tree and Post Puller is a must for arborists, farmers, ranchers and landscapers. Pulls up to 8 inch trees and posts quickly and efficiently. Causes minimal disturbance to the ground without leaving the stump or roots. The open quick attach mounting plate allows maximum visibility even when the attachment is lifted into the operators field of view. The no slip design of the jaws provides maximum holding power without breaking the tree or post off at the ground. 100% Made in the USA!



PROWLERTRACKS.COM

TREE SHEAR



Tree Shear Specifications

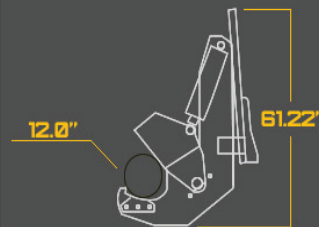
- Weight range: 850lbs - 1075ilbs
- Max Cut: 12" Trees
- Hydraulic Cylinder: 5" x 12"
- Max Rotation: 90°
- Cutting Blade Size: 1"
- Attachment: Universal

Prowler offers 3 different versions of our popular Tree Shear Attachment. It is available in Non-rotating, manual rotating, and hydraulic rotating models. Each one is capable of cutting up to 12 inch trees with a powerful 30 tons of shearing force. All models features a 5X 12; hydraulic cylinder and a 1 inch thick AR400 Blade. With the rotating option, the tree shear can be used to cut horizontal limbs; perfect for trimming around farm fields. Like all Prowler Attachments it comes with universal Quick attach plate, covered hoses, and flat face couplers.

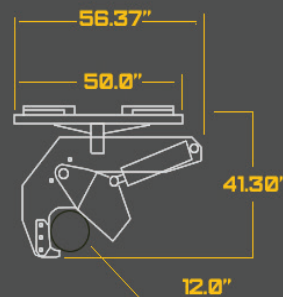
The hydraulic rotating model also comes with switch and easy to install wiring. This OEM quality attachment features a Powder coated finish and is made in the USA!



SIDE VIEW



TOP VIEW



SIDE VIEW



PROWLERTRACKS.COM

4-IN-1 BUCKET



4-n-1 Bucket Specifications

- Weight: 1395 lbs.
- Width: 84"
- Max Opening: 32.09"
- Height: 28.91"
- Length: 33.84"
- Attachment Plate: Universal

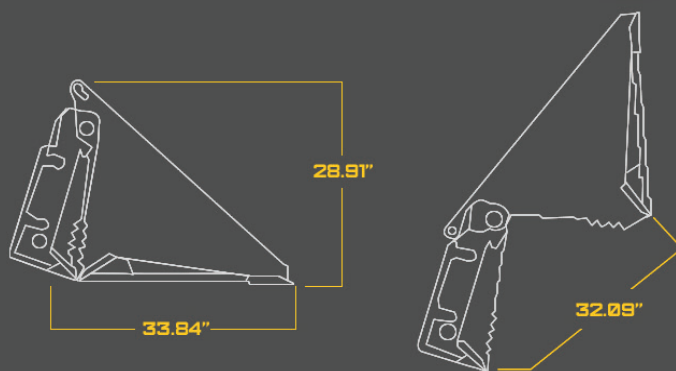
* Available with teeth and cutting edge*

The Prowler 4-N-1 Buckets are very versatile attachments for your skid steer and are ideal for grappling, dozing, backfilling, loading, digging and fine grading.

Our X-treme 4-N-1 Buckets have cylinders with a 3" bore by 8" stroke. This 4-N-1 Bucket is equipped with replaceable teeth. They are also built with top quality steel, oversized pins and bushings, with grease fittings at every pivot point. This unit is so strong it will exceed the lifting capacity of any skid steer machine that it is used on.

Our Heavy Duty 4-N-1 attachment is available in 63", 66" and 72". X-treme 4-N-1 is available in 72", 78", 81" and 84".

3" bore by 8" stroke cylinders
Grease fittings at every pivot point
Powder coated finish

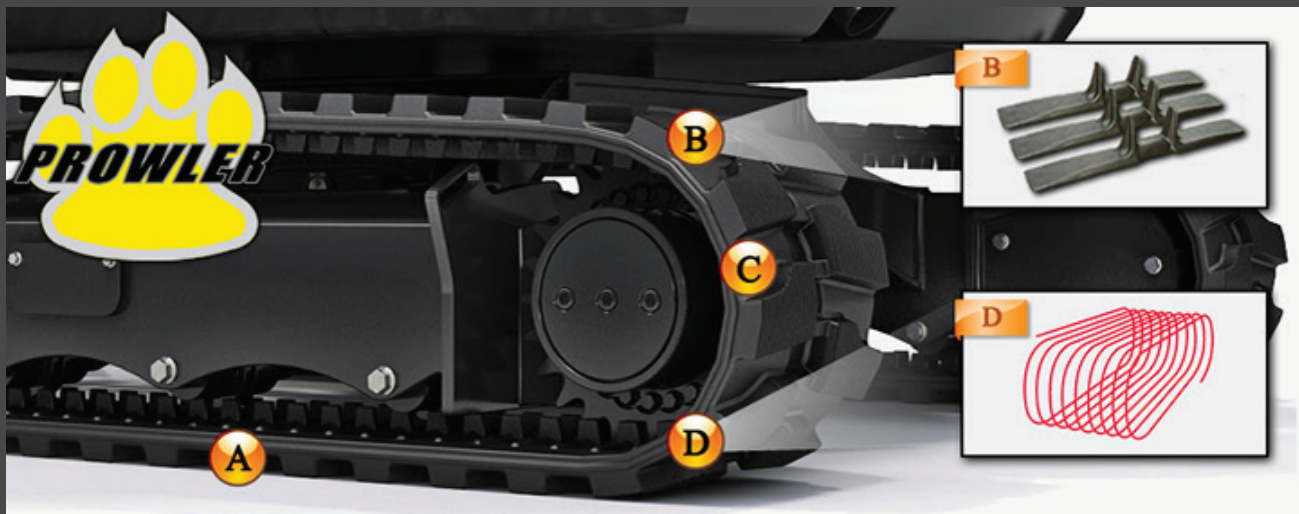


PROWLERTRACKS.COM

MINI EXCAVATOR RUBBER TRACKS



Prowler's mini excavator replacement rubber tracks extra thick lugs provide an excellent grip in soft soils such as dirt, mud, and clay. This gives you the advantage of safely positioning your excavator on less than desirable terrain or grades. The tread footprint and metal drive lug design combine to reduce track vibration while crawling over hard surfaces at both high and low speeds



A: Deep heat resistant lugs provide excellent traction for multiple applications including mud, dirt, sand, clay, gravel and asphalt.

B: Strong embedded steel links provide a smooth rolling path for your excavator's undercarriage.

C: A thick carcass made of all natural rubber and industry leading synthetics provide a reliable chunk and gouge resistant track.

D: Continuously wound steel cables, wrapped with 3/16" vulcanized rubber.

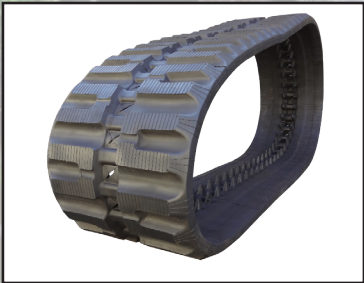
If you need assistance on determining what size track fits your machine, visit our website www.rubbertrack.com or call us at 812.662.7668.

PROWLERTRACKS.COM

CTL RUBBER TRACKS



D-BLOCK: The Staggered “D” Block pattern is the most common OEM style tread pattern. This tread provides moderate traction in soft or muddy conditions, but wears well on hard surfaces such as gravel or asphalt.



C-LUG: The C-Lug is another OEM style tread pattern. This tread pattern will provide good traction soft or muddy condition and still wear well on hard surfaces. The C-Lug works well in most conditions.



AT SERIES: This All-Terrain rubber track performs well in all conditions. The closeness of the tread bars provides multiple pressure points to reduce turf damage. The straight bar design provides good traction in conditions soft and muddy conditions. This track performs excellent in snow as well.



EXT SERIES: Prowler’s exclusive EXTreme series tread pattern provides the most aggressive traction in the industry. This tread pattern provides excellent traction in any condition. The angled and stepped tread helps to eject material to keep the tread area open. The EXT series rubber track provides amazing hillside traction allowing you to accomplish more with your machine.

If you need assistance on determining what size track fits your machine, visit our website www.rubbertrack.com or call us at 812.662.7668.

PROWLERTACKS.COM

MTL RUBBER TRACKS

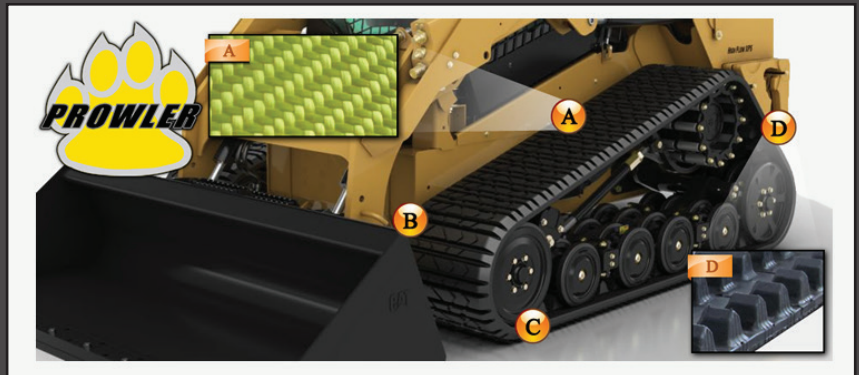


NON-METAL CORE MTL RUBBER TRACKS:

Prowler's Non-Metal core tracks, depending on size, range from 185 lbs. to 330 lbs. They are much more flexible and have less ground disturbance than metal core tracks.

All natural rubber compounds provide extra durability which increase the over-all service life of the track. The wide track design increases flotation, allowing your machine to travel easily over soft soils such as sand, mud, turf and clay.

Non-Metal Core tracks, as illustrated on the right, consist of an all-natural rubber compound and strong inner fibers. This allows for a more flexible track system. Some of the key benefits of this track system are:



- A. Extra deep, gouge resistant tread lugs.
- B. Heavy duty steel embedded links for excellent mobility over uneven terrain.
- C. Extra thick rubber carcass for increased service life and extra protection from unforeseen hazards.
- D. Continuous steel cables nested deep within provide extra strength over other brands that use overlapped cords.



If you need assistance on determining what size track fits your machine, visit our website www.rubbertrack.com or call us at 812.662.7668.

PROWLERTRACKS.COM

MINI SKID STEER RUBBER TRACKS



The versatile Mini Skid Steer track loader enables you to efficiently handle a wide variety of jobs whether you're using an auger to dig holes for deck piers and fence posts, a bucket to excavate for patios and side-walks or just to carry loads of dirt, sand or pea gravel to your job site.

Landscapers may want to consider using our Prowler Diamondback turf-friendly tread design to reduce damage to someones lawn. Someone who operates mostly around mud, or on gravel may want something a little more aggressive.



MINI SKID STEER LOADER TRACK SELECTION

Prowlers Mini Skid Steer tracks provide excellent traction and flotation. Many tread style options are available. You may choose from the aggressive OEM styles, or Prowlers patented Diamondback "turf friendly" tread design depending on the applications you operate most within.



180MM



230MM



Diamondback
Series



250MM

If you need assistance on determining what size track fits your machine, visit our website www.rubbertrack.com or call us at 812.662.7668.

PROWLERTRACKS.COM

EXCAVATOR RUBBER TRACK PADS



Rubber track pads can be added to steel tracks to increase traction on hard, abrasive surfaces. They protect hard surfaces such as asphalt and concrete as well as minimizing turf damage on various worksites.

Prowler offers 3 different types of rubber track pads for various applications. Pads can be fitted to machines from 4000# to 48000# class all the way up to Bolt on, Side Mount, and Chain Mount are available to fit many models of Excavators, Compact Track Loaders, and dozers with steel track undercarriages.



Chain Mount Pads



Sometimes referred to as "Road Liner" pads, these bolt directly to the steel chain of the undercarriage.

Available in:

- 400mm
- *450mm
- 500mm

Bolt-On Rubber Pads



Bolt on track pads are bonded to pre-formed metal plates that fit between the steel grousers.

Available in:

- 300mm
- 400mm
- 450mm
- 500mm
- *600mm

Clip-On Rubber Pads



Clip-on Rubber Pads are designed to fit triple grouser steel tracks with or without pre-drilled mounting holes.

Available in:

- 400mm
- 450mm
- 500mm
- *600mm
- *700mm



If you need assistance on determining what size track pads fit your machine, visit our website www.rubbertrack.com or call us at 812.662.7668.

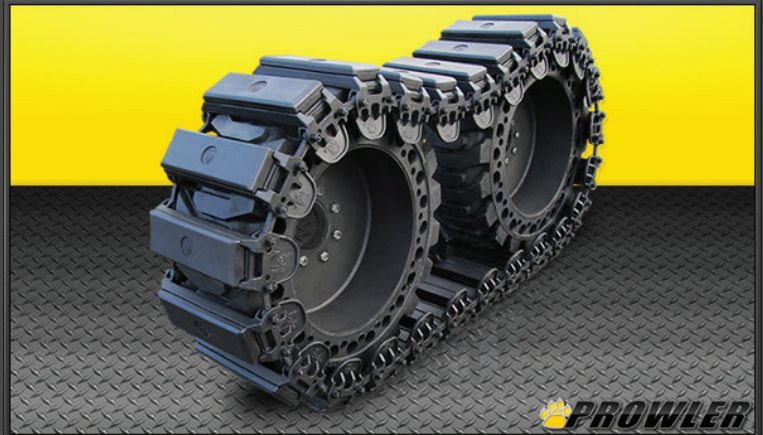
PROWLERTRACKS.COM

OVER THE TIRE TRACKS FUSION



Fusion Track Specification

OTT Type: Fusion
Material: Steel & Rubber
Rubber Pads: Optional
Install Tool Kit: Included
Warranty: 1 year



The Fusion series is the “All-In-One” track system offering all the characteristics of many track designs in one track system. This new design offers the best of steel bar style traction, with rubber pad style flotation. Incorporating double raised cleats with a closed center the Fusion track offers unmatched traction and superior flotation.

The new Fusion track gives you the ability to run without or with rubber pads to protect asphalt and sidewalks. The unique design of the Patent Pending side mount rubber pad system can be installed or removed while the tracks are still on the machine. No other OTT track system provides this much flotation and raw traction in one system.

These tracks will fit modern skid steers with 12x16.5 tires including Bobcat, Case, Cat, Gehl, John Deere, Mustang, New Holland, Thomas etc..

Part No	List Price	Tire Size	Wt. (lbs)	Total Pads	Links	Hardware
FS1050	\$1,895.00	10x16.5	700	50	100	200
FS1256	\$2,095.00	12x16.5	956	56	112	224
FS1050WP	\$2,895.00	10x16.5 w/pad	850	50	100	200
FS1256WP	\$3,095.00	12x16.5 w/pad	1204	56	112	224



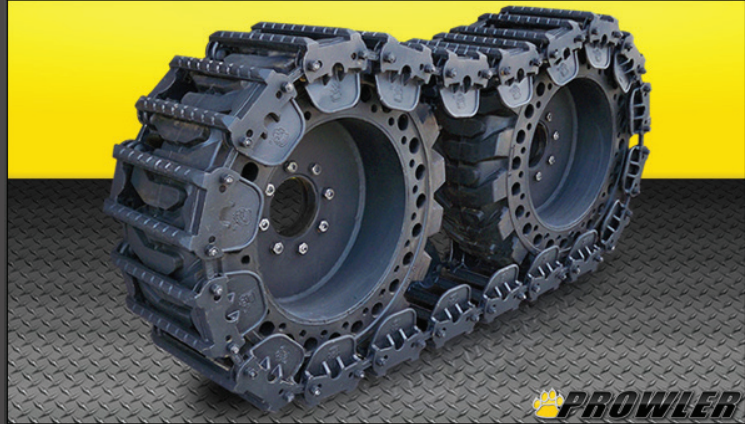
PROWLERTRACKS.COM

OVER THE TIRE TRACKS PREDATOR



Predator Track Specification

OTT Type: Predator
Material: Steel
Track Count: 2 (Both Sides)
Install Tool Kit: Included
Warranty: 1 year



The Prowler Predator steel track system is an economical and most maintenance free way of equipping your skid steer loader with OTT tracks. 10 and 12 inch Predators are available for under \$2000! A set of Predators provide increased flotation in muddy conditions, as well as serious grip and traction in rough, uneven terrain. The open double bar design allows for easy displacement of soft soils and debris during normal operation.

The Predator track system is compatible with skid steers utilizing 10×16.5, 12×16.5, or 14×17.5 pneumatic tires.*

Part No	List Price	Tire Size	Wt. (lbs)	Total Pads	Links	Hardware
PT1044	\$1,795.00	10x16.5	770	44	88	176
PT1248	\$1,995.00	12x16.5	960	48	96	192
PT1452	\$2,995.00	14x17.5	1170	52	104	208



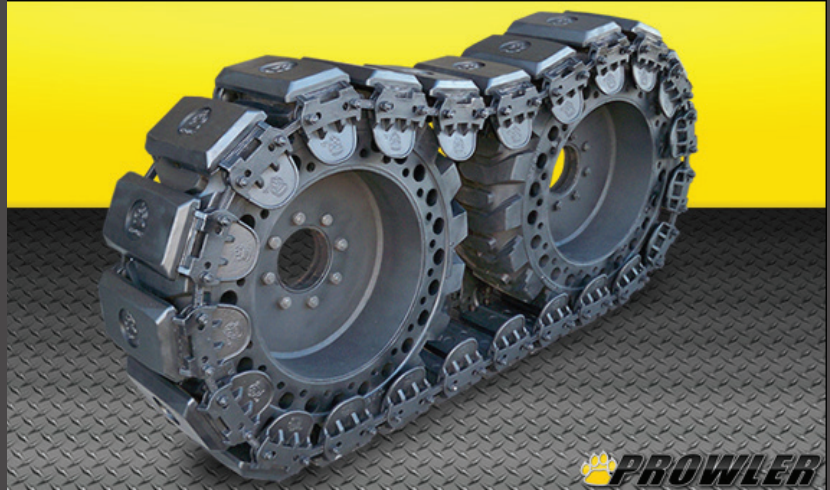
PROWLERTRACKS.COM

OVER THE TIRE TRACKS STEALTH



Stealth Track Specification

OTT Type: Stealth
Material: Steel & Rubber
Track Count: 2 (Both Sides)
Rubber Pads: Included
Install Tool Kit: Included
Warranty: 1 year



The Prowler Stealth OTT system provides the highest flotation while traveling over sand, loose gravel and mud. The easily replaceable rubber pads provide a smoother ride for the operator, while eliminating damage to asphalt, concrete and other sensitive surfaces. The high quality rubber pads provide many hours of worry-free service. Four bolts secure each rubber pad to the steel chain, making it easy to access and replace the pads as necessary.

The Stealth track system is compatible with skid steers utilizing 10x16.5 and 12x16.5 pneumatic tires.*

Part No	List Price	Tire Size	Wt. (lbs)	Total Pads	Links	Hardware
ST1050	\$2,595.00	10x16.5	900	50	100	200
ST1256	\$2,995.00	12x16.5	1120	56	112	224



PROWLERTRACKS.COM

WHEEL SPACERS



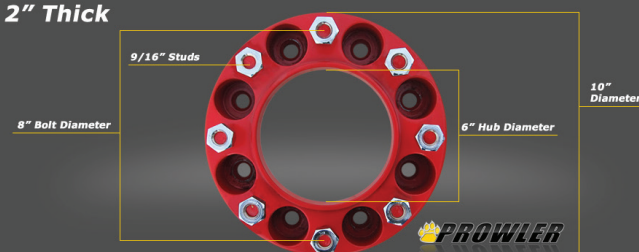
Prowler's wheel spacers allow you to obtain the proper clearance needed to run over the tire track systems or tire chains on your machine. Below are specifications of each style, specific to the machines they were designed to work with.

1½" Thick



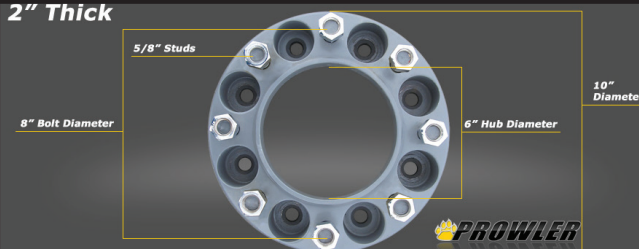
Lugs: 6
Clearance: 1 1/2"
Tire Size: 10x16.5
Weight (per set): 65 lbs
Stud Size: 9/16"
Bolt Diameter: 6"
Hub Diameter: 4.62"

2" Thick



Lugs: 8
Clearance: 2"
Tire Size: 10x16.5 & 12x16.5
Weight (per set): 88 lbs
Stud Size: 9/16"
Diameter: 10"
Hub Diameter: 6"

2" Thick



Lugs: 8
Clearance: 2"
Tire Size: 10x16.5 & 12x16.5
Weight (per set): 88 lbs
Stud Size: 5/8"
Diameter: 10"
Hub Diameter: 6"

2" Thick



Lugs: 8
Clearance: 2"
Weight (per set): 132 lbs
Stud Size: 9/16"
Diameter: 12.75"
Hub Diameter: 9"

PROWLERTRACKS.COM



PRODUCT	PRICE	LIST PRICE	WEIGHT
ANGLE BROOM			
HYDRAULIC ANGLE - 48"	\$3,067	\$3,527	750lbs
HYDRAULIC ANGLE - 60"	\$3,168	\$3,643	820lbs
HYDRAULIC ANGLE - 72"	\$3,271	\$3,762	890lbs
HYDRAULIC ANGLE - 84"	\$3,659	\$4,208	950lbs
AUGER			
STANDARD DUTY AUGER DRIVE	\$1,400	\$1,610	304lbs
AUGER BIT - 9"	\$434	\$499	89lbs
AUGER BIT - 12"	\$475	\$546	110lbs
AUGER BIT - 18"	\$589	\$677	160lbs
EXTREME AUGER DRIVE (Offered in Hex or Round Drive)	\$1,845	\$2,121	325lbs
AUGER BIT - 4"	\$324	\$373	45lbs
AUGER BIT - 6"	\$324	\$373	45lbs
AUGER BIT - 9"	\$434	\$499	86lbs
AUGER BIT - 12"	\$475	\$546	115lbs
AUGER BIT - 15"	\$499	\$574	131lbs
AUGER BIT - 18"	\$589	\$677	176lbs
AUGER BIT - 20"	\$795	\$914	185lbs
AUGER BIT - 24"	\$695	\$799	279lbs
AUGER BIT - 30"	\$939	\$1,080	325lbs
AUGER BIT - 36"	\$1,079	\$1,241	448lbs
TREE BIT - 18"	\$599	\$689	144lbs
TREE BIT - 24"	\$760	\$875	200lbs
TREE BIT - 30"	\$890	\$1,025	268lbs
TREE BIT - 36"	\$1,025	\$1,180	352lbs

PROWLERTRACKS.COM



PRODUCT	PRICE	LIST PRICE	WEIGHT
SHAFT EXTENSION - 24"	\$199	\$229	34lbs
SHAFT EXTENSION - 36"	\$249	\$458	46lbs
SHAFT EXTENSION - 48"	\$399	\$458	57lbs
SHAFT EXTENSION - 60"	\$449	\$515	70lbs
2 9/16" ROUND DRIVE TO HEX	\$179	\$206	16lb
HEX DRIVE TO 2 9/16" ROUND	\$205	\$235	15lbs
BACKHOE			
BACKHOE STIFF ARM	\$1,700	\$1,955	500lbs
BACKHOE SWING ARM	\$3,500	\$4,025	600lbs
BUCKET - 8"	\$306	\$352	65lbs
BUCKET - 12"	\$321	\$370	100lbs
BUCKET - 16"	\$383	\$440	125lbs
BUCKET - 20"	\$421	\$485	150lbs
BUCKET - 24"	\$459	\$528	175lbs
BACKHOE THUMB	\$157	\$180	40lbs
BRUSH CUTTER			
STANDARD DUTY BRUSH CUTTER - 60"	\$3,050	\$4,505	900lbs
STANDARD DUTY BRUSH CUTTER - 72"	\$3,350	\$3,805	1000lbs
X-TREME LOW FLOW BRUSH CUTTER - 60"	\$3,950	\$4,543	1450lbs
X-TREME LOW FLOW BRUSH CUTTER - 72"	\$4,200	\$4,830	1650lbs
X-TREME MID FLOW BRUSH CUTTER - 60"	\$4,750	\$5,455	1650lbs
X-TREME MID FLOW BRUSH CUTTER - 72"	\$4,995	\$5,744	1860lbs
X-TREME HIGH FLOW BRUSH CUTTER - 60"	\$6,545	\$7,525	1750lbs
X-TREME HIGH FLOW BRUSH CUTTER - 72"	\$6,795	\$7,814	2000lbs
CONCRETE BUCKET			
1/2 YARD BUCKET	\$1,195	\$1,375	393lbs
3/4 YARD BUCKET	\$1,295	\$1,490	420lbs

PROWLERTRACKS.COM



PRODUCT	PRICE	LIST PRICE	WEIGHT
6-WAY DOZER BLADE			
6-WAY DOZER BLADE - 72"	\$3,576	\$4,110	1300lbs
6-WAY DOZER BLADE - 84"	\$3,632	\$4,175	1400lbs
6-WAY DOZER BLADE - 96"	\$3,688	\$4,240	1500lbs
FORK GRAPPLE			
FORK GRAPPLE	\$1,595	\$1,830	700lbs
GRAPPLE BUCKET			
X-TREME GRAPPLE BUCKET - 66"	\$2,630	\$3,025	1000lbs
X-TREME GRAPPLE BUCKET W/TEETH - 66"	\$2,770	\$3,185	1056lbs
X-TREME GRAPPLE BUCKET - 72"	\$2,684	\$3,085	1050lbs
X-TREME GRAPPLE BUCKET W/TEETH - 72"	\$2,824	\$3,250	1106lbs
X-TREME GRAPPLE BUCKET - 78"	\$2,738	\$3,150	1100lbs
X-TREME GRAPPLE BUCKET W/TEETH - 78"	\$2,849	\$3,275	1163lbs
X-TREME GRAPPLE BUCKET - 81"	\$2,765	\$3,175	1150lbs
X-TREME GRAPPLE BUCKET W/TEETH - 81"	\$2,921	\$3,350	1213lbs
X-TREME GRAPPLE BUCKET - 84"	\$2,791	\$3,210	1160lbs
X-TREME GRAPPLE BUCKET W/TEETH 84"	\$2,947	\$3,390	1223lbs
X-TREME GRAPPLE BUCKET - 96"	\$2,845	\$3,275	1260lbs
X-TREME GRAPPLE BUCKET W/TEETH - 96"	\$3,017	\$3,470	1330lbs
HEAVY DUTY GRAPPLE BUCKET - 63"	\$2,422	\$2,785	750lbs
HEAVY DUTY GRAPPLE BUCKET W/TEETH - 63"	\$2,562	\$2,950	799lbs
HEAVY DUTY GRAPPLE BUCKET - 66"	\$2,450	\$2,820	800lbs
HEAVY DUTY GRAPPLE BUCKET W/TEETH - 66"	\$2,549	\$2,925	856lbs
HEAVY DUTY GRAPPLE BUCKET - 72"	\$2,486	\$2,860	850lbs
HEAVY DUTY GRAPPLE BUCKET W/TEETH - 72"	\$2,649	\$3,045	906lbs
HEAVY DUTY GRAPPLE BUCKET - 78"	\$2,658	\$3,055	875lbs
HEAVY DUTY GRAPPLE BUCKET W/TEETH - 78"	\$2,697	\$3,100	938lbs

PROWLERTRACKS.COM



PRODUCT	PRICE	LIST PRICE	WEIGHT
ROCK GRAPPLE BUCKET			
ROCK GRAPPLE BUCKET - 63"	\$2,400	\$2,760	750lbs
ROCK GRAPPLE BUCKET - 72"	\$2,475	\$2,845	799lbs
ROCK GRAPPLE BUCKET 81"	\$2,549	\$2,930	800lbs
ROCK GRAPPLE BUCKET W/TEETH - 63"	\$2,550	\$2,933	856lbs
ROCK GRAPPLE BUCKET W/TEETH - 72"	\$2,625	\$3,020	850lbs
ROCK GRAPPLE BUCKET W/TEETH - 81"	\$2,699	\$3,100	913lbs
ROOT GRAPPLE			
X-TREME ROOT GRAPPLE - 63"	\$2,195	\$2,525	915lbs
X-TREME ROOT GRAPPLE - 66"	\$2,295	\$2,640	950lbs
X-TREME ROOT GRAPPLE - 72"	\$2,395	\$2,755	975lbs
X-TREME ROOT GRAPPLE - 78"	\$2,495	\$2,870	1000lbs
X-TREME ROOT GRAPPLE - 81"	\$2,595	\$2,999	1025lbs
X-TREME ROOT GRAPPLE - 84"	\$2,688	\$3,090	1050lbs
HEAVY DUTY ROOT GRAPPLE - 63"	\$1,799	\$2,070	700lbs
HEAVY DUTY ROOT GRAPPLE - 66"	\$1,825	\$2,100	725lbs
HEAVY DUTY ROOT GRAPPLE - 72"	\$1,899	\$2,185	750lbs
HEAVY DUTY ROOT GRAPPLE - 78"	\$1,949	\$2,240	770lbs
HEAVY DUTY ROOT GRAPPLE - 81"	\$1,975	\$2,275	800lbs
HEAVY DUTY ROOT GRAPPLE -84"	\$1,999	\$2,300	825lbs
STANDARD ROOT GRAPPLE - 63"	\$1,395	\$1,605	600lbs
STANDARD ROOT GRAPPLE - 68"	\$1,479	\$2,045	625lbs
ROOT RAKE			
X-TREME ROOT RAKE - 66"	\$1,199	\$1,380	500lbs
X-TREME ROOT RAKE - 72"	\$1,299	\$1,495	550lbs
X-TREME ROOT RAKE - 84"	\$1,399	\$1,610	600lbs
X-TREME ROOT RAKE - 96"	\$1,499	\$1,725	650lbs

PROWLERTRACKS.COM



PRODUCT	PRICE	LIST PRICE	WEIGHT
HEAVY DUTY GRAPPLE BUCKET - 81"	\$2,830	\$3,255	925lbs
HEAVY DUTY GRAPPLE BUCKET W/TEETH - 81"	\$2,745	\$3,155	988lbs
GRAPPLE RAKE			
X-TREME GRAPPLE RAKE - 63"	\$2,671	\$3,070	820lbs
X-TREME GRAPPLE RAKE - 72"	\$2,788	\$3,205	900lbs
X-TREME GRAPPLE RAKE - 81"	\$2,830	\$3,255	950lbs
X-TREME GRAPPLE RAKE - 84"	\$2,888	\$3,320	1050lbs
X-TREME GRAPPLE RAKE - 96"	\$2,995	\$3,445	1150lbs
HAY EQUIPMENT			
X-TREME SINGLE HIGH BACK HAY SPEAR	\$550	\$635	250lbs
HIGH DUMP BUCKET			
HIGH DUMP BUCKET - 72"	\$2,785	\$3,200	950lbs
HIGH DUMP BUCKET - 84"	\$2,895	\$3,330	1050lbs
HIGH DUMP BUCKET - 96"	\$3,000	\$3,455	1100lbs
LAND LEVELER			
LAND LEVELER	\$6,795	\$7,815	419lbs
LOG SPLITTER			
INVERTED & HORIZONTAL - 20 TON	\$1,795	\$2,050	815lbs
LONG BOTTOM BUCKET			
LONG BOTTOM BUCKET - 63"	\$795	\$915	415lbs
LONG BOTTOM BUCKET - 66"	\$895	\$1,030	425lbs
LONG BOTTOM BUCKET - 72"	\$995	\$1,150	438lbs
LONG BOTTOM BUCKET - 78"	\$1,095	\$1,260	460lbs
LONG BOTTOM BUCKET - 81"	\$1,140	\$1,315	480lbs
LONG BOTTOM BUCKET - 84"	\$1,195	\$1,375	535lbs
LONG BOTTOM BUCKET W/7 TEETH - 63"	\$1,145	\$1,315	505lbs
LONG BOTTOM BUCKET W/8 TEETH - 66"	\$1,195	\$1,374	517lbs

PROWLERTRACKS.COM



PRODUCT	PRICE	LIST PRICE	WEIGHT
SOD ROLLER			
SOD ROLLER	\$1,495	\$1,720	231lbs
SNOW-N-LITTER BUCKET			
SNOW-N-LITTER BUCKET - 63"	\$920	\$1,060	505lbs
SNOW-N-LITTER BUCKET - 66"	\$955	\$1,100	525lbs
SNOW-N-LITTER BUCKET - 72"	\$1,095	\$1,260	550lbs
SNOW-N-LITTER BUCKET - 78"	\$1,168	\$1,345	575lbs
SNOW-N-LITTER BUCKET - 81"	\$1,210	\$1,395	590lbs
SNOW-N-LITTER BUCKET - 84"	\$1,249	\$1,435	605lbs
SNOW-N-LITTER BUCKET - 96"	\$1,395	\$1,605	665lbs
SNOW PLOW			
SNOW PLOW - 72"	\$1,685	\$1,940	700lbs
SNOW PLOW - 84"	\$1,740	\$2,000	822lbs
SNOW PLOW - 96"	\$2,335	\$2,685	944lbs
SNOW PUSHER			
SNOW PUSHER - 72"	\$1,800	\$2,070	775lbs
SNOW PUSHER - 84"	\$1,910	\$2,195	836lbs
SNOW PUSHER - 96"	\$2,015	\$2,315	896lbs
STUMP BUCKET			
HEAVY DUTY STUMP BUCKET	\$759	\$875	300lbs
STUMP GRAPPLE			
STUMP GRAPPLE	\$1,395	\$1,605	575lbs
SWING BOOM CUTTER			
SWING BOOM CUTTER	\$6,995	\$8,045	1025lbs
TREE BOOM			
TREE BOOM	\$595	\$675	250lbs
TREE & POST PULLER			
TREE AND POST PULLER	\$1,579	\$1,815	300lbs

PROWLERTRACKS.COM



PRODUCT	PRICE	LIST PRICE	WEIGHT
LONG BOTTOM BUCKET W/8 TEETH - 72"	\$1,145	\$1,315	540lbs
LONG BOTTOM BUCKET W/9 TEETH - 78"	\$1,215	\$1,400	570lbs
LONG BOTTOM BUCKET W/9 TEETH - 81"	\$1,281	\$1,475	585lbs
LONG BOTTOM BUCKET W/9 TEETH - 84"	\$1,345	\$1,550	595lbs
LONG BOTTOM BUCKET W/BOCE - 63"			
LONG BOTTOM BUCKET W/BOCE - 66"			
LONG BOTTOM BUCKET W/BOCE - 72"			
LONG BOTTOM BUCKET W/BOCE - 78"			
LONG BOTTOM BUCKET W/BOCE - 81"			
LONG BOTTOM BUCKET W/BOCE - 84"			
MANURE FORKS			
MANURE FORKS - 60"	\$859	\$985	332lbs
MANURE FORKS - 66"	\$915	\$1,055	357lbs
MANURE FORKS - 72"	\$959	\$1,100	369lbs
PALLET FORKS			
HEAVY DUTY CLASS II FORKS & FRAME	\$690	\$795	420lbs
RIPPER			
X-TREME RIPPER - 60"	\$1,295	\$1,490	500lbs
X-TREME RIPPER - 72"	\$1,395	\$1,605	550lbs
X-TREME RIPPER - 84"	\$1,496	\$1,720	600lbs
ROCK BUCKET			
ROCK BUCKET - 63"	\$1,095	\$1,260	435lbs
ROCK BUCKET - 72"	\$1,195	\$1,375	465lbs
ROCK BUCKET - 81"	\$1,295	\$1,490	495lbs
ROCK BUCKET W/7 TEETH - 63"	\$1,225	\$1,410	497lbs
ROCK BUCKET W/8 TEETH - 72"	\$1,345	\$1,550	534lbs
ROCK BUCKET W/9 TEETH - 81"	\$1,465	\$1,685	565lbs

PROWLERTRACKS.COM



PRODUCT	PRICE	LIST PRICE	WEIGHT
TREE SHEAR			
TREE SHEAR - ROTATING	\$3,695	\$4,250	1025lbs
TREE SHEAR - NON-ROTATING	\$2,895	\$3,330	850lbs
TREE SHEAR - HYDRAULIC ROTATING	\$4,795	\$5,515	1075lbs
4 - IN - 1 BUCKET			
HD 4-N-1 BUCKET - 63"	\$2,175	\$2,500	785lbs
HD 4-N-1 BUCKET - 66"	\$2,235	\$2,570	810lbs
HD 4-N-1 BUCKET - 72"	\$2,285	\$2,630	850lbs
HD 4-N-1 BUCKET W/TEETH - 63"	\$2,300	\$2,645	829lbs
HD 4-N-1 BUCKET W/TEETH - 66"	\$2,375	\$2,730	875lbs
HD 4-N-1 BUCKET W/TEETH - 72"	\$2,425	\$2,788	900lbs
X-TREME 4-N-1 BUCKET - 72"	\$2,675	\$3,135	1150lbs
X-TREME 4-N-1 BUCKET - 78"	\$2,725	\$3,135	1255lbs
X-TREME 4-N-1 BUCKET - 81"	\$2,800	\$3,225	1295lbs
X-TREME 4-N-1 BUCKET - 84"	\$2,850	\$3,275	1332lbs
X-TREME 4-N-1 BUCKET W/TEETH - 72"	\$2,800	\$3,220	1210lbs
X-TREME 4-N-1 BUCKET W/TEETH - 78"	\$2,875	\$3,300	1305lbs
X-TREME 4-N-1 BUCKET W/TEETH - 81"	\$2,935	\$3,375	1350lbs
X-TREME 4-N-1 BUCKET W/TEETH - 84"	\$2,985	\$3,430	1395lbs

PROWLERTRACKS.COM



TRACK SIZE	WEIGHT	PRICE
MINI EXCAVATOR RUBBER TRACKS		
180x72x32	44lbs	\$151.00
180x72x34	47lbs	\$161.00
180x72x36	50lbs	\$170.00
180x72x37	51lbs	\$175.00
180x72x38	52lbs	\$180.00
180x72x39	54lbs	\$184.00
180x72x40	55lbs	\$189.00
180x72x42	58lbs	\$198.00
180x72Kx42	83lbs	\$275.00
230x72x36	90lbs	\$245.00
230x72x39	97lbs	\$266.00
230x72x42	104lbs	\$286.00
230x72x43	107lbs	\$293.00
230x72x54	134lbs	\$368.00
230x48x60	83lbs	\$300.00
230x48x62	86lbs	\$305.00
230x48x66	91lbs	\$330.00
230x48x68	94lbs	\$340.00
230x48x70	97lbs	\$350.00
230x48x72	100lbs	\$360.00
230x48x76	105lbs	\$380.00
230x48x80	111lbs	\$400.00
250x48.5x84	235lbs	\$588.00
250x72x44	121lbs	\$308.00
250x72x45	124lbs	\$315.00
250x72x56	154lbs	\$392.00

TRACK SIZE	WEIGHT	PRICE
MINI EXCAVATOR RUBBER TRACKS		
300x52.5Ax72	218lbs	\$648.00
300x52.5Ax74	224lbs	\$666.00
300x52.5Ax76	230lbs	\$684.00
300x52.5Ax78	236lbs	\$702.00
300x52.5Ax80	242lbs	\$720.00
300x52.5Ax82	248lbs	\$738.00
300x52.6Ax84	254lbs	\$756.00
300x52.5Ax86	260lbs	\$774.00
300x52.5Ax92	278lbs	\$828.00
300x52.5Bx72	261lbs	\$648.00
300x52.5Bx74	268lbs	\$666.00
300x52.5Bx76	276lbs	\$684.00
300x52.5Bx78	283lbs	\$702.00
300x52.5Bx80	290lbs	\$720.00
300x52.5Bx82	297lbs	\$739.00
300x52.5Bx84	305lbs	\$756.00
300x52.5Bx86	312lbs	\$774.00
300x52.5Bx90	326lbs	\$810.00
300x52.5Bx98	355lbs	\$882.00
300x52.5x80K	302lbs	\$760.00
300x52.5x84K	305lbs	\$798.00
300x52.5x88K	319lbs	\$836.00
300x53x80	312lbs	\$776.00
300x53x84	328lbs	\$814.00
300x55.5x78Y	304lbs	\$776.00
300x55.5x82Y	320lbs	\$814.00

PROWLERTRACKS.COM



TRACK SIZE	WEIGHT	PRICE
MINI EXCAVATOR RUBBER TRACKS		
320x54x78	283lbs	\$741.00
320x54x90	326lbs	\$855.00
320x100x40	262lbs	\$679.00
320x106x39	282lbs	\$768.00
350x52.5x86	326lbs	\$946.00
350x54.5x86	430lbs	\$1,032.00
350x56x84	411lbs	\$1,008.00
370x107x41	410lbs	\$1,107.00
400x72.5Ax70	504lbs	\$1,260.00
400x72.5Ax72	518lbs	\$1,296.00
400x72.5Ax74	533lbs	\$1,332.00
400x72.5Bx70	519lbs	\$1,260.00
400x72.5Bx72	534lbs	\$1,296.00
400x72.5Bx74	549lbs	\$1,332.00
400x72.5Bx76	564lbs	\$1,368.00
400x72.5x74KW	651lbs	\$1,369.00
400x75.5x74	596lbs	\$1,539.00
400x107x46	545lbs	\$1,395.00
400x144x36Y	545lbs	\$1,296.00
420x100x52	577lbs	\$1,248.00
420x100x54	599lbs	\$1,296.00
450x71x80	762lbs	\$1,920.00
450x71x82	781lbs	\$1,968.00
450x71x84	800lbs	\$2,016.00
450x71x86	819lbs	\$2,064.00

TRACK SIZE	WEIGHT	PRICE
MINI EXCAVATOR RUBBER TRACKS		
450x73.5x80	864lbs	\$1,920.00
450x73.5x86	929lbs	\$1,978.00
450x76x80	904lbs	\$2,320.00
450x81Ax74	799lbs	\$1,924.00
450x81Ax76	821lbs	\$2,976.00
450x81Bx72	850lbs	\$1,872.00
450x81Bx74	873lbs	\$1,924.00
450x81Bx76	897lbs	\$1,976.00
450x83.5x72	792lbs	\$1,908.00
450x83.5x74	814lbs	\$1,961.00
500x90x78	1045lbs	\$2,496.00
500x90x82	1099lbs	\$2,624.00
500x90x78W	1456lbs	\$3,920.00
600x100x80	1456lbs	\$3,920.00
600x100x82	1492lbs	\$4,018.00
700x100x98	2646lbs	\$6,468.00
CTL TRACKS AT SERIES		
B320x86x47AT	321lbs	\$728.50
B320x86x49AT	334lbs	\$759.50
B320x86x50AT	341lbs	\$775.00
B320x86x52AT	355lbs	\$806.00
B320x86x53AT	361lbs	\$821.50
B320x86x54AT	368lbs	\$837.00
B400x86x49AT	412lbs	\$980.00
B400x86x50AT	420lbs	\$1,000.00

PROWLERTRACKS.COM



TRACK SIZE	WEIGHT	PRICE
CTL TRACKS AT SERIES		
B400x86x52AT	437lbs	\$1,040.00
B400x86x53AT	445lbs	\$1,060.00
B400x86x55AT	462lbs	\$1,100.00
B400x86x56AT	470lbs	\$1,120.00
B450x86x52AT	499lbs	\$1,092.00
B450x86x55AT	528lbs	\$1,155.00
B450x86x56AT	538lbs	\$1,176.00
B450x86x58AT	557lbs	\$1,218.00
B450x86x59AT	566lbs	\$1,239.00
B450x86x60AT	576lbs	\$1,260.00
T320x86x46AT	294lbs	\$713.00
T320x86x48AT	307lbs	\$744.00
T320x86x52AT	333lbs	\$806.00
T400x86x52AT	403lbs	\$1,040.00
T450x100x48AT	560lbs	\$1,200.00
T450x100x50AT	583lbs	\$1,250.00
OEM STYLE PATTERNS D BLOCK PATTERN		
B300x84x46xRD-MM	304lbs	\$690.00
B320x86Dx49	323lbs	\$759.50
B320x86Dx50	330lbs	\$775.00
B320x86Dx52	343lbs	\$806.00
B320x86Dx53	350lbs	\$821.50
B320x86Dx54	356lbs	\$837.00
B400x86Dx49	412lbs	\$980.00
B400x86Dx50	420lbs	\$1,000.00
B400x86Dx52	437lbs	\$1,040.00

TRACK SIZE	WEIGHT	PRICE
D BLOCK PATTERN		
B400x86Dx53	445lbs	\$1,060.00
B400x86Dx55	462lbs	\$1,100.00
B400x86Dx56	470lbs	\$1,120.00
B450x86Dx52	509lbs	\$1,092.00
B450x86Dx55	538lbs	\$1,155.00
B450x86Dx56	548lbs	\$1,176.00
B450x86Dx58	567lbs	\$1,210.00
B450x86Dx60	587lbs	\$1,260.00
T320x86KDx52	338lbs	\$806.00
T400x86KDx52	390lbs	\$1,040.00
T450x100KDx48	552lbs	\$1,200.00
T450x100KDx50	575lbs	\$1,250.00
C-BLOCK PATTERN		
B320x86x49C	343lbs	\$759.50
B320x86x52C	364lbs	\$806.00
B320x86x54C	378lbs	\$837.00
B450x86x52C	510lbs	\$1,092.00
B450x86x55C	539lbs	\$1,155.00
B450x86x56C	549lbs	\$1,176.00
B450x86x58C	568lbs	\$1,218.00
EXT SERIES		
B320x86x49EXT	466lbs	\$808.50
B320x86x50EXT	476lbs	\$825.00
B320x86x52EXT	495lbs	\$858.00
B320x86x53EXT	505lbs	\$874.50

PROWLERTRACKS.COM



TRACK SIZE	WEIGHT	PRICE
EXT SERIES		
B450x86x55EXT	524lbs	\$1,265.00
B450x86x56EXT	534lbs	\$1,288.00
B450x86x58EXT	553lbs	\$1,334.00
B450x86x60EXT	572lbs	\$1,380.00
T320x86x52EXT	328lbs	\$858.00
T450x100x48EXT	552lbs	\$1,296.00
T450x100x50EXT	575lbs	\$1,350.00
NON METAL CORE MULTI TERRAIN LOADERS		
280x101.6x37	148lbs	\$1,036.00
381x101.6x42AV	181lbs	\$1,176.00
457x101.6x51AV	275lbs	\$1,683.00
457.101.6x51-3R	291lbs	\$1,734.00
457x101.6x56AV	302lbs	\$1,736.00
Toro Dingo		
149x88x29/98-9800	24lbs	\$266.00
250x88x28/100-8931	52lbs	\$364.00
MINI SKID STEER		
180x72x32DB	44lbs	\$184.00
180x72x36DB	50lbs	\$207.00
180x72x39DB	54lbs	\$224.25
180x72x41DB	57lbs	\$235.75
180x72x42DB	58lbs	\$241.50
230x72x36DB	80lbs	\$306.00
230x72x39DB	86lbs	\$331.50
230x72x41DB	91lbs	\$348.50
230x72x42DB	93lbs	\$357.00

TRACK SIZE	WEIGHT	PRICE
MINI SKID STEER		
230x72x44DB	97lbs	\$374.00
230x72x54DB	119lbs	\$459.00
B250x72x39DB	82lbs	\$331.00
B250x72x44DB	92lbs	\$374.00
B250x72x45DB	95lbs	\$382.50
B250x72x56DB	118lbs	\$472.64
DOZER		
300x71x72	508lbs	\$1,422.00
300x71x74	522lbs	\$1,461.00
500x71x72	794lbs	\$2,520.00
500x71x74	816lbs	\$2,590.00

PROWLERTRACKS.COM